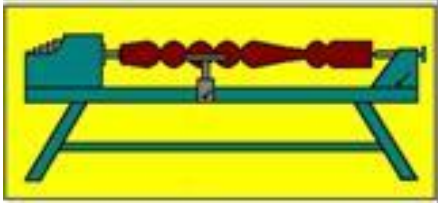


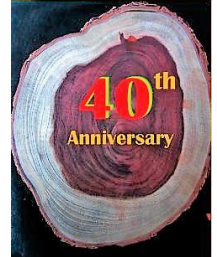
Turning Talk

Volume 33 Number 2

March 2019



Presidential Words *For March 2019*



Dear Members,

Several special events are planned in March to kick off our 40th Anniversary celebrations. They include a wooden egg turning demo on 2 March, Wooden Egg Competition on 16 March and the Open Days on 23 and 24 March. Please see details of these upcoming events in the WSQ Diary on page 2.

The entry form for the Wooden Egg Competition was published in last month's Turning Talk. Please complete one entry form for each entry. Entry forms and entries can be brought along on the day 16 March or left with Alwyn in the Library. The only specifications for entries are that they must be **egg-shaped** and **made predominantly of wood**. Incorporation of other materials is allowed. Entries can be any size, solid or hollow, laminated, natural timber or decorated (pyrography, paint, carving etc). They can be stand-alone or accompanied by an egg cup or purpose-built stand.

The entries will be judged by all members attending the monthly Forum meeting on 16 March, led by a panel of 2-3 'egg-spurts'. Awards will be made on the basis of members' comments (and voting if necessary). The number and type of awards will not be fixed in advance but will be decided by those attending the judging forum on 16 March, depending on the number and range of entries. They may include awards for the largest egg, the smallest egg, innovative design, technical prowess, most unusual timber, natural timber beauty (most attractive egg without added decoration), best pyrography, best painted egg, best carved egg, best hollow egg, best laminated egg, best egg incorporating other materials, best egg-shaped lidded container, best egg with egg-cup combination, best egg with other stand design, best set of eggs (any number), best finish, encouragement award (limited to new members with limited woodturning experience), etc. Awards and prizes will be presented on Tuesday 19 March (after the AGM), and Award-Winning entries will be displayed as

a Special Exhibition during the Open Days on 23 and 24 March. Voting for the People's Choice Award will take place during the Open Days, with the winner announced on Tuesday 26 March.

Prizes for the Wooden Egg Competition have been donated by VicMarc Machinery, Carbatec and Woodwork Machinery Plus. I thank these sponsors for their support of the Society.



Also, on display at the Open Days will be wooden eggs decorated by Grade 4, 5 and 6 students at Greenslopes State School. Thanks to the WSQ members who donated the eggs for this project (Don McMillan, Albert Takken and John Carney), and to John Carney for organising this community collaboration.

Brian Creese
President

Diary and Looking Ahead at WSQ March 2019 and Beyond

Date	Day of Month	Session Title	Convenors	Times
1 Mar	1 st Friday	Toy and Open Workshop Toy Group Open Workshop	Peter Churchward	8.00am – 3.00pm
2 Mar	1 st Saturday	WSQ Demonstration	See below	9.00am – Noon
5 Mar	1 st Tuesday	Open Workshop New Member Training Pyrography Group Evening Open Workshop	John Sheppard & Bob McGeechan Rosie Thornton	8.00am – Noon 1.00pm – 3.30pm 1.00pm – 4.00pm 6.00pm – 9.00pm
7 Mar	1 st Thursday	WSQ Safety & Workshop Induction for New Members		9.00am – 12noon
9 Mar	2 nd Saturday	Management Committee Meeting		9.00am – Noon
12 Mar	2 nd Tuesday	Open Workshop New Member Training Evening Open Workshop	Lyndon Prescott	8.00am – Noon 1.00pm – 3.30pm 6.00pm – 9.00pm
14 Mar	2 nd Thursday	Pre-Booked Project Tuition Cost - \$25.00	Rob McKee	9.00am – 12.30pm
16 Mar	3 rd Saturday	Woodturning Discussion Forum/ Show and Tell		9.00am – Noon
18 Mar	3 rd Monday	Pyrography Group	Rosie Thornton	9.00am – Noon
19 Mar	3 rd Tuesday	Open Workshop New Member Training Evening Open Workshop	John Sheppard & Bob McGeechan Rob McKee (Former DVA Team members welcome) John Sheppard	8.00am – Noon 1.00pm – 3.30pm 6.00pm – 9.00pm
26 Mar	4 th Tuesday	Open Workshop New Member Training Evening Open Workshop	Rob McKee Rob McKee (Former DVA Team members welcome) Allan Dickson	8.00am – Noon 1.00pm – 3.30pm 6.00pm – 9.00pm
28 Mar	4 th Thursday	Pre-Booked Project Tuition Cost - \$25.00	Rob McKee	9.00am – 12.30pm
N/A	5 th Tuesday Only if one falls in the month	Open Workshop New Member Training Evening Open Workshop	Rob McKee Rob McKee Rob McKee	8.00am – Noon 1.00pm – 3.30pm 6.00pm – 9.00pm
Future Events and Important Dates				
Saturday 2 March		Demonstration by 4 Members (Theo Haralampou, Allan Dickson, Rob McKee and Brian Creese) titled “Egg Turning” - 9am to noon - Cost: \$5		
Saturday 16 March		Woodturning Discussion Forum/Show and Tell / Closing Date and Judging for Wooden Egg Competition - 9am – noon - Cost: \$5		
Tuesday 19 March		Annual General Meeting - 9:30am to 10am - Cost: \$5		
Friday 22 to Sunday 24 March		Timber, Tools and Artisan Show (formally known as the Timber and Working with Wood Show) RNA Showgrounds - Details available at www.timbertoolsartisan.com.au		
Saturday 23 and Sunday 24 March		WSQ Open Days - 9am to 4pm - Entry is FREE - Refreshments will be available at modest prices.		
Friday 29 to Sunday 31 March		Turnfest 2019 - Seaworld Resort, Gold Coast - Details available at http://turnfest.com.au/		
Saturday 6 April		Demonstration – Details to be advised - 9am to noon - Cost: \$5		
Saturday 22 June		40th Anniversary celebrations - 9am to noon -.. Entry is FREE		
Saturday 22 June		Demonstration by Stephen Hughes - 1pm to 4pm - Topic to be advised - Cost: \$25		
Sunday 23 June		Demonstration by Stephen Hughes - 9am to 4pm - Topic to be advised - Cost: \$35		

March Demonstration

The March demo features a “who’s who” of WSQ turners i.e. Theo Haralampou, Allan Dickson, Rob McKee and Brian Creese. It will take place on Saturday 2 March between 9.00 am and noon. These star turners will demonstrate their various techniques to make wooden eggs. **This is a demo not to be missed, so don’t ... miss it, that is.**

Geoff Holbeck
Editor – Turning Talk

Treasurer’s Report

As we only operated for a couple of weeks in January, it was a quite month from a financial perspective, with a summary as follows:

Income	
Memberships	\$810
Meeting Income	\$694
Container Refunds	\$159
Hall Rental	\$60
Shop Profit	\$254
Sundry Income	<u>\$115</u>
	\$2,092
Less Expenses	
Workshop Expenses	\$481
Insurance	\$332
Library Purchases	\$75
Telephone & Internet	\$114
Cleaning	\$240
Rates	\$138
Other Expenses	<u>\$187</u>
	\$1,567
Net Profit	\$525
Cash at Bank	\$35,562

Container Refunds are starting to be a valuable source of funds. Workshop Expenses include airfares of \$400 for Stephen Hughes, our special demonstrator in June.

John Reed
Treasurer

Container Refund Scheme

As mentioned in my Treasurer’s Report, Container Refunds are becoming an easy and valuable source of funds for the Society. Nearly \$500 has been received since the scheme commenced on 1st November 2018.

WSQ is registered as a Container Collection (Donation) Point. This means that, if you wish, WSQ can receive the refund on containers which you return. This can be done in two ways. Firstly, you can bring your containers to WSQ premises and we will arrange for the refund. Secondly, you can take the containers to your local refund point and nominate WSQ as the recipient of the refund which will be credited to our bank account.

WSQ’s ID for this is C10001309.

Are you still placing your empty drink bottles in your recycling bin? If so, why not drop them into WSQ Hall and allow us to receive the refund.

Most drink containers between 150ml and 3 litres will be eligible for a 10 cent refund under the scheme. You can check whether a container is eligible by entering its barcode at <https://www.containersforchange.com.au/how-it-works>.

Please consider nominating WSQ as the recipient of your refunds – the more funds we receive from this source, the more funds we’ll have to cover operating costs and to improve WSQ’s facilities.

John Reed
Treasurer

Table Booking and Volunteering Form

Open Days, 23-24 March 2019

Volunteers are needed for the following activities during the weekend. Please consider how you can help to make this year's Open Days successful and memorable by ticking all boxes where you could contribute a few hours of your time over the weekend. Completed forms should be returned to Brian Creese, Alwyn Clark or Bob Kennedy by Saturday 2 March. Rosters will then be prepared based on your preferred activities and availability for individual sessions.

Name: _____

☐ **Sellers,**

limit of one table per member. All sellers are expected to spend some time demonstrating in the workshop at some stage over the weekend.

☐ **Publicity,**

including distribution of flyers around the neighbourhood and setting up the banners before the event.

☐ **Raffle prize,**

donation of a suitable eye-catching woodturned item will be very welcome. Please see Paul Tierney.

☐ **Raffle tickets.**

Sale of raffle tickets over the weekend.

☐ **Welcome VIPs**

and other guests, **organise tours** of the facility as appropriate, and talk to visitors about the **benefits of WSQ membership**.

☐ **Organisation of the Wooden Egg**

Display and People's Choice Award for the Wooden Egg Competition.

☐ **Donations of cakes, scones and biscuits for morning and afternoon teas**

☐ **Morning and afternoon teas,**

volunteers are needed both days for serving tea, coffee and cakes.

☐ **BBQ lunch.**

We need one member to organise the BBQ lunches, and a couple more to cook and serve the food.

☐ **Sales Desk,**

including wrapping of sold items.

☐ **Woodturning Demonstrations.**

It would be great to have two or three lathes in operation throughout the weekend. No prior demonstrating experience is required, just a willingness to allow others to watch you turning. It would be great if all of our sellers also contributed to the woodturning demonstrations.

☐ **Other demonstrations**

and hands-on activities. Pyrography, leatherwork, toymaking, egg painting, etc.

Name of activity:

Availability – please tick all boxes where you think you will be available to help

☐ Saturday morning 23 March

☐ Saturday afternoon 23 March

☐ Sunday morning 24 March

☐ Sunday afternoon 24 March

Brian Creese
President

NOTICE OF THE 2019
ANNUAL GENERAL MEETING

THIS IS TO ADVISE ALL MEMBERS THAT
IN ACCORDANCE WITH THE CONSTITUTION
OF THE

WOODTURNERS ASSOCIATION OF QUEENSLAND INC

THERE WILL BE A
ANNUAL GENERAL MEETING

- AT 19 PINE STREET GREENSLOPES

AT 9.30 AM

TUESDAY 19TH MARCH 2019

FOR THE FOLLOWING PURPOSES ONLY

- Welcome and a-Apologies
- Confirmation of Minutes of Special General Meeting held on 27th November 2018
- Presentation of Management Report
- Presentation of Treasures and Auditor's report
- Life Membership Award
- Other Business

Broken, and Imperfect is Still Beautiful

When Alice broke her grandmother's porcelain swan, she couldn't bear to throw it away.

"It was the only connection to Gran I have, other than photos," she said. But she also didn't take it to the local repair shop to get it restored. Instead, she decided to embrace — and even accentuate — the fractures in the porcelain, by filling them with gold.

"It used to be my grandmother's swan, but now it's my grandmother's swan that... has this beautiful golden necklace on," she says. The technique used is called Kintsugi. Translated as "golden joinery". It is a traditional Japanese artform dating back 600 years. Kintsugi is based on the idea that beauty exists in imperfection, and fractures should be accepted as part of an object's history and beauty, rather than disguised. The idea of beauty in imperfection resonates with many people, across time and cultures.

Many people give Kintsugi works as gifts — for friends going through a divorce, and family members battling cancer. They like the philosophy that something that is broken can be reassembled "to be even more beautiful". Kintsugi is associated with broken and mending and transformation. "Kintsugi is all about embracing things that are flawed or imperfect, to mend them together so the cracks are more highlighted instead of hidden.

As members of WSQ we all unwittingly practise this ancient artform when we take a piece of timber and create an object of beauty. This is especially so if the natural beauty of mother nature is still evident in our work.



Based on an article in 'ABC News on-line' by Hong Jiang, 2/1/20019.

Bob Kennedy
Vice President

Vale Ken McCall

Dear WSQ members

It is my sad duty to tell you that Ken McCall, WSQ Founder and Life Member, passed away recently.

Ken was one of the founders of our Society, originally known as the 'Queensland Woodturners Society', which was formed on Saturday 23 June 1979 at a meeting of 13 disaffected members of the Woodcraftsman's Guild. He served as Vice President of the Society for 2 years (1980-1982) and President for a further two years (1982-1984). Ken was an enthusiastic woodworker and woodturner and was also a member of the International Wood Collectors Society, and the Decorative and Ornamental Turners Society. He was appointed a Life Member of WSQ in 2009.

Ken was always good for a yarn and a story, and happily shared his extensive knowledge of woodcrafts and timbers with other members. Vale Ken.

Brian Creese
President



Greenslopes State School Egg Decorating

WSQ has invited students from Greenslopes State School to be part of our wooden egg competition. WSQ Members made and presented to the school 60 wooden eggs for the students to decorate.



Here are the eggs

Ms Shannon Wilson, Arts Specialist at the school has invited children from grades 5 and 6, as a "Design Challenge", to submit their designs for decorating the eggs. Some grade 4 students will also be involved in the challenge.

The eggs will be decorated with acrylic paints. Shannon hopes to have the students have the base colour on their eggs completed early next week, and from there the students will complete the decorating of the eggs. Once completed the decorated eggs will form part of the display for the WSQ Open days on 23 and 24 March. It is hoped that a few examples will also be at Greenslopes Mall on Saturday 16 March where WSQ will hold a promotion for the Open Days.

John Carney
Management Committee Member

Eggs

"Eggs constitute an excellent form for storing various species of wood. They show the grain of the sample in every direction, are agreeable to handle and easy to store. They are also ornamental to look at and sensual to the touch.

Making a good egg is a challenge for the turner and gives valuable practice in using various tools."

This is an extract from the Forrest Hill Woodturners Newsletter of 7 February 2015.

John Carney
Management Committee Member

Convenor Training

Recently we commenced a revised Convenor Training program.

It is a simple 5 week "on the job training" regime.

The only prerequisites were that all attendees were competent woodturners, and members, who were prepared to use the knowledge gained to contribute to the Society in some way.

Week 1, saw 4 members attend, with 2 Convenors contributing. It was, in my opinion, a resounding success. Interestingly, the trainees are already members who do 'more than their fair share' at WSQ!!!

We are all looking forward to the following sessions, which will primarily focus on the machinery aspects of our craft, and ... 'where to from here'?

When the training is completed, there is a gentleman's agreement that ... "I personally gained from this experience, and it therefore follows that I should help others in this craft".

Knowing the attendees, there is no doubt in my mind that this will happen.

Bob Kennedy
Vice President

Safety in the Workshop

This inaugural article, and the first of many I hope, is simply an extract from the WSQ Safety Manual.

I encourage all members to read and understand it. The use of dust masks is also a critical safety measure to be used during all phases of woodturning.

As mentioned below the use of compressed air to clean/sweep floors and machinery is NOT ACCEPTABLE. That is why we have brushes and brooms.

"4.5 Dust Collection

Airborne dust is a serious potential hazard in the Workshop. The Society aims to minimise levels of airborne dust by using a combination of Micronair dust extraction system, cross ventilation (open windows), mobile air filters, in situ dust extractors, and a ceiling

extraction fan. It is the responsibility of all members to ensure that airborne dust is minimised during the operation of machinery and equipment.

Before operating any equipment or machinery in the Workshop, members must ensure that appropriate dust removal procedures are activated, e.g. windows are open, air filters and extractors are switched on, and equipment-specific vents to the dust extraction system are opened.

Members should minimise the use of compressed air for cleaning equipment to minimise the amount of dust in the air. Compressed air should not be used for "sweeping" floor surfaces or for blowing down clothing."

Bob Kennedy
Vice President

Membership Matters!

Birthdays

A member who will be celebrating his birthday during March is:

> Frank Garland

Happy Birthday Frank, and also to those "older" members with a birthday in March for whom we don't have a date of birth.

> Bob Hume from Forest Lake,
> Scotty Taylor from Kallangur, and
> Geoff Dickson from The Gap.

New members, when signing in please look on the small white board next to the cash tin for your name badges.

New Members

A hearty welcome to the following new members:

John Reed
Acting Membership Secretary

March/April Council Library Displays

	NORTHSIDE	SOUTHSIDE
March	Everton Park	Logan West
April	N/A	Carindale

John Byrne
WSQ Member

Toni Dowd
Assistant Librarian

2019 Library Displays

“If a window of opportunity appears, don’t pull down the shade”

Over the past 15 years the Woodturners Society of Queensland has established a wonderful tradition of monthly library displays on both sides of Brisbane.

Greg Fletcher, who was associated with Charlie Edwards and Ken Groves as Southside Library Display co-ordinator for many years, comments that:

“These displays are a great way to publicise the Society and our hobby and the Libraries welcome our participation, usually with a display of relevant books available for loan.”

Greg’s sentiments are strongly reiterated in many of the comments of library staff I have recently spoken with when organising bookings for 2019. For example,

“The public loved the display last year. We would be delighted to have another one. (Fairfield Library).”

“What a wonderful opportunity. Can we have a display for two months of the year? Let’s book it in now!”

“We have two cabinets and also a gallery if any of your members have an item that can be hung. (Mount Ommaney Library)”

“We haven’t had a display here but I have seen displays around the traps and I think the work is incredible. We would be very happy to promote it. (Corinda Library)”

John Byrne, a long-term supporter and co-ordinator of the library displays on the northside, points out some of the benefits of the displays:

“It gives all an opportunity to showcase their work. Displays are a great way to attract interest in turning and other woodwork ... who knows it might encourage someone to have a go themselves!”

Greg Fletcher agrees:

“We also had many visitors to Mt Coot-tha and the Society open days, which were stirred up by leaflets left with the display. Over the years we have had a number of enquiries for purchases of items and possible membership.”

IDEAS FOR THE FUTURE

Sandy May, the previous co-ordinator of the Southside displays, reflects that:

“In the past members have contributed items for 1 - 2 years but it really doesn’t have to be for that long! And

if at any stage the work is needed it can be returned to the member.

Items of the appropriate size entered into our Annual Competition — whether they have received an award or not - would certainly be worthy of display.

Display items to complement special occasions like Easter and Christmas would also be welcomed.

A couple of libraries have suggested that “a stepping stone display” showing how turning is done would appeal to the public and also be educational ... like the process of making a small item such as a pen – from blank to the finished product.”

If you are interested in helping us action these ideas or others to promote your craft do let us know. In the mean time we need more items to display on the southside. Please bring them into Pine St as soon as you can,

2019 SOUTHSIDE LIBRARY BOOKINGS:

March – Logan West
April – Carindale
May – June – Mount Ommaney
July - Holland Park
August – Mt Gravatt
September – Corinda
October – Inala
November – Annerley
December – Fairfield

If you live near any of the above libraries and have time to help deliver, set up and/or collect the display items please let me know.

To promote WSQ membership skills and enhance our profile please provide the following information about each item you have or wish to showcase:

- Item Name
- Timber
- Brief Description
- \$ value
- Your Name

Don’t forget to watch this space for the outcome of our Expression of Interest for a display in the Brisbane Square Library from October to December 2019.

Toni Dowd
Assistant Librarian

February Demonstration

On the morning of Saturday February 2 seventeen members and friends gathered at WSQ Hall to witness a demonstration titled "Texturing on Rims of Bowls" conducted by Peter Wyer.

Peter advised that the type of texturing being demonstrated was what he had seen Simon Begg use at Turnfest last year. He added that this texturing was best suited to plain designed turned projects. Peter stated that the hardest thing was to make the textured pattern appear random.



A Completed Project

Peter used the handmade jig shown below to hold the bowl while he textured the rim.



He used a conical burr in his Archer Power Carving device to create different size and depth holes, in a pattern that looked random. The following image shows Peter texturing a bowl rim. Peter also used 3 smaller sized ball burrs to make the smaller holes in the texturing. He uses a ScotchBrite brush to tidy up the surface.



The image below shows the bowl at the end of this stage of the demonstration.



In the second part of the demonstration Peter set out to create a "honeycomb rock" texture on a sphere. A completed project is shown below.



Peter used the handmade jig shown below to hold the sphere while he textured the surface. He used a fine disk to mark the quadrant to be textured and a tapered burr to slightly texture the surface. Then he used a large ball burr to create the holes.



The image below shows Peter creating the large holes in the sphere.



The image below shows the sphere at the end of this stage of the demonstration.



The audience gave Peter a hearty round applause at the end of his excellent demonstration. Well done Peter.

Geoff Holbeck
Editor – Turning Talk

WSQ Club Jackets for Sale



Mike Models the Only WSQ Jacket in Existence

I know it is a bit warm to think about winter club jackets, but last year we missed the boat in securing fabric for them. An order for jackets will be placed in early March so I need numbers to

snare a good price and assure a pre-winter delivery.

The attached photo shows the clubs fleecy jacket with embroidered chest patch and zippered front. Sizes are the same as our current light weight club shirts and they will be \$50 for this order only.

Future orders will be a slight increase on this due to the small numbers ordered. We will not be keeping jackets in stock. They will be by special order only.

If you are wishing to purchase a jacket, please supply the following info to me at mikedodson9@hotmail.com or by phone on 0427 233 182 before 1/03/2019

- Name
- Size required
- Number of jackets required

Mike Dodson
WSQ Member

Timberbits Order

An bulk order to Timberbits will be sent on Wednesday 5 March 2019.

A Timberbjts Pen Making Catalogue will be available in the WSQ Shop for your reference. For all other available items go to www.timberbits.com.

When ordering please provide (a) Item Number, (b) Item Description, (c) Quantity Required, your contact details, including phone number and email address.

Orders can be left at the WSQ Shop or emailed to donwmcmillan@hotmail.com. If you leave an order at the shop, please leave me a message on 0439704622.

Freight charges will be shared by weight.

Name:

Phone Number:

Email:

Don McMillan
WSQ Member

Item Number (a)	Item Description (b)	Quantity (c)

Tree of the Month – Spotted Gum



Botanical name: *Corymbia maculata* (Formerly *Eucalyptus maculata*)

Family name: Myrtaceae

Distribution: Very widely distributed - from Southern Victoria through New South Wales into Central Queensland on the coastal plains. Spotted Gum is a very large hardwood which can attain a height of 40m (132ft) under ideal conditions.

Colour: The heartwood ranges in colour from a deep reddish-brown, yellows, greenish yellow to light brown with a fairly distinct wavy pattern.

The timber: The timber is usually interlocked with the marked wavy pattern which produces a fiddleback appearance. The sapwood is distinct - very much paler than the heartwood but there is an unclear zone between the heartwood and softwood which can complicate preservation treatment and grade classification.

Mechanical properties: If straight grain sections are available it can be steam bent. High crush resistance, excellent shock resistance. Highly durable heartwood has given the timber excellent above water applications in marine work. The sapwood is insect susceptible.

Working properties: Spotted Gum has a slightly greasy feel. Despite its density it works with minimal difficulty with only moderate resistance to cutting and cutter blunting. It must be pre-drilled

for fasteners to avoid splitting. It will not accept phenolic adhesives but all other commercial adhesives work well. It can be worked to an exceptional finish though the waxy exudate may discolour the final finish.

Uses: Flooring, marine decking, furniture, decking, tool handles, construction and the timber is available as a veneer.

Availability: Plentiful



Spotted Gum Timber



Spotted Gum Sushi Platter



Laminated Bowl Using Spotted Gum by Allan Short

Geoff Holbeck
Editor – *Turning Talk*

The text and tree image sourced from "Timber in Australia in Colour" by David C Clark. The turned images were provided by WSQ.

Turning Talk

Published by the
Woodturners Society of Queensland Incorporated

Management Committee

President: Brian Creese 3378 4041
Vice President: Bob Kennedy 3892 4675
Secretary: Rosie Thornton 0456 073 790
Treasurer: John Reed 3263 1861
Members: Alwyn Clark 3803 4270
Geoff Holbeck 3901 6782
John Carney 3245 6135
John Donaldson 0407 022 403
Paul Tierney 3288 3509
Reg Weber 3206 2325
Bob McGeechan 3394 1839

Other Positions

Emeritus Vice President: Kev Kruger
Newsletter Editor: Geoff Holbeck 3901 6782
Membership Secretary: Alwyn Clark 3803 4270
Librarian: Alwyn Clark 3803 4270
Assistant Librarian: Toni Dowd 3175 0383
Storekeeper: Don McMillan 3814 4820
Training Manager: Rob McKee 3207 1785
Asst. Training Manager: Wayne Molloy 3273 2659
Mt Coot-tha Co-ordinator: Rob McKee 3207 1785
Competition Organiser: Vacant
Web Co-ordinator: Gary Bidgood 0407 144 763
Welfare Officer: Ron Marlow 3355 5995
Caretaker: Len Young 3397 8827

VM VICMARC[®] MACHINERY PTY LTD
MANUFACTURER OF QUALITY WOODTURNING LATHES, CHUCKS AND ACCESSORIES

VICMARC GRINDING JIG & STATION



The Vicmarc Grinding System has been designed to make tool sharpening quick and easy. This Grinding system allows you to get an excellent and consistent grind every time.

The Vicmarc Slow Speed Bench Grinder is a 1475rpm, 1.5kW grinder with two 200mm x 32mm grinding wheels. The grinder comes standard with a 36 grit left hand wheel and 60 grit right hand wheel.
Vicmarc Grinder Part Number - P00319



The Vicmarc Grinding Jig is used to sharpen bowl gouges, spindle gouges and a variety of other tools. The unique design of the Vicmarc Grinding Jig gives you extra swing without any interference.
Grinding Jig Part Number - V00437

The Vicmarc Grinding Station is used to sharpen tools such as skew chisels, parting tools, roughing gouges etc. This system has been designed with pre-set angles, allowing you to achieve the same grind angle every time.
Grinding Station Part Number - V00438

For more information contact your local dealer or download the Grinding Jig and Grinding Station User Manual from our website www.vicmarc.com

Check our website for the full range of
Lathes, Chucks and Accessories

For your nearest Vicmarc[®] dealer please contact us:
Phone: + 61 7 3284 3103 Fax: + 61 7 3283 4656
Web: www.vicmarc.com
Email: vicmarc@vicmarc.com



When in Brisbane, come
and see our large showroom

Specials on Vicmarc Lathes & Chucks

WE SUPPLY A COMPLETE RANGE OF:

- Woodturning/carving equipment
- Cabinet making equipment
- Local and imported timbers
- Janik pyrographs (wood-burning equipment)
- Clock movements, dials, barameters and thermometers
- Cutlery blanks
- Round marble and ceramic tiles in lots of new patterns
- A large range of woodworking polishes
- Other accessories too numerous to mention.

Pick up your **FREE** catalogue for friendly
and efficient mail order service

9 Paltarra Street, The Gap, Brisbane 4061
Phone: (07) 3300 4545 or 1800 674 241
Fax: (07) 3300 5656

The views expressed in this publication are
not necessarily those of the Woodturners
Society of Queensland or its Management
Committee.

Other organisations are welcome to use, with
appropriate acknowledgement, editorial material
from this publication.

You're invited to contribute to the content of TT.

To do so, preferably by Email:

gholbeck@hotmail.com

Or, by mail:

C/O TT EDITOR @ WSQ
19 Pine Street, Greenslopes
Brisbane, Qld 4120

**All contributions for the April 2019
edition of Turning Talk need to be
submitted by no later than
Thursday 28 March 2019.**