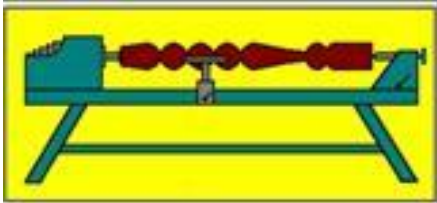


Turning Talk

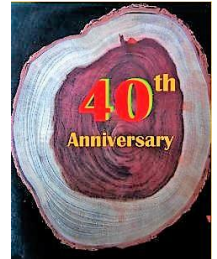
Volume 33 Number 6

July 2019



Presidential Words

For July 2019



Dear Members,

Annual Woodturning Competition

It was very pleasing to see increased numbers of entrants (24) and entries (82) compared with last year (68 entries from 20 entrants). It was particularly encouraging to see more Level 3 entries in the Competition this year (35, compared with only 21 last year). Another pleasing aspect of the Competition was to see the number and quality of entries in the new Pyrography category.



The Competition was judged on Wednesday 19 June by three members of Redcliffe and District Woodcraft Society: Kerry Cameron, Ken Rays and Graham Spratt. I thank the three judges for their commitment to the task and their helpful comments on the entries. Certificates and Perpetual Trophies were awarded before the start of the Anniversary celebration on Saturday 23 June. The display of all the competition pieces on Saturday morning made a fitting backdrop to the Anniversary celebrations and was much admired by our distinguished visitors.

Award-winning pieces will be on display during the August Mt Coot-tha Exhibition (10-11 August), when WSQ members and visitors will be able to vote for the People's Choice Award.

40th Anniversary Celebrations

The Competition Awards Ceremony was followed by a celebration of our 40th Anniversary. We were privileged to welcome both of our surviving Foundation Members (Gary Beck and John Linek), and politicians from all three levels of government: Federal MP Terri Butler, state MP Joe Kelly, and the newly appointed councillor for Coorparoo Ward, Fiona Cunningham. As well as short talks by each of the politicians, we heard Rob McKee present a short history of the Society. Gary and John were then invited to cut the beautifully presented Anniversary Cake, watched on by Fiona, Terri and Joe. Many thanks to Mike Dodson for organising the cake, and to John Donaldson and John Carney for organising the BBQ lunch. Please visit our Facebook page to see (and Like) more pictures of the event:



Stephen Hughes Demo

We were very fortunate to have Stephen Hughes from Melbourne contribute to our Anniversary celebrations by presenting demos on Saturday afternoon and all day Sunday. Please see Geoff Holbeck's write-up of the demo elsewhere in Turning Talk. Special thanks go to Sue Kennedy and Jeanette Donaldson for organising the sit-down lunch that we enjoyed on Sunday.

Brian Creese
WSQ President

Diary and Looking Ahead at WSQ July 2019 and Beyond

<i>Date</i>	<i>Day of Month</i>	<i>Session Title</i>	<i>Convenors</i>	<i>Times</i>
2 July	1 st Tuesday	Open Workshop New Member Training Pyrography Group Evening Open Workshop	John Sheppard & Bob McGeechan Rosie Thornton	8.00am – Noon 1.00pm – 3.30pm 1.00pm – 4.00pm 6.00pm – 9.00pm
4 July	1 st Thursday	WSQ Safety & Workshop Induction for New Members		9.00am – 12noon
5 July	1 st Friday	Toy and Open Workshop Toy Group Open Workshop	Peter Churchward	8.00am – 3.00pm
6 July	1 st Saturday	WSQ Demonstration	See below Not this month due to the Stephen Hughes demonstration on June 22 and 23	9.00am – Noon
9 July	2 nd Tuesday	Open Workshop New Member Training Evening Open Workshop	Wayne Molloy	8.00am – Noon 1.00pm – 3.30pm 6.00pm – 9.00pm
11 July	2 nd Thursday	Pre-Booked Project Tuition Cost - \$25.00	Rob McKee	9.00am – 12.30pm
13 July	2 nd Saturday	Management Committee Meeting		9.00am – Noon
15 July	3 rd Monday	Pyrography Group	Rosie Thornton	9.00am – Noon
16 July	3 rd Tuesday	Open Workshop New Member Training Evening Open Workshop	John Sheppard & Bob McGeechan Rob McKee (Former DVA Team members welcome) John Sheppard	8.00am – Noon 1.00pm – 3.30pm 6.00pm – 9.00pm
20 July	3 rd Saturday	Woodturning Discussion Forum/ Show and Tell	John Carney	9.00am – Noon
23 July	4 th Tuesday	Open Workshop New Member Training Evening Open Workshop	Rob McKee Rob McKee (Former DVA Team members welcome) Allan Dickson	8.00am – Noon 1.00pm – 3.30pm 6.00pm – 9.00pm
25 July	4 th Thursday	Pre-Booked Project Tuition Cost - \$25.00	Rob McKee	9.00am – 12.30pm
30 July	5 th Tuesday Only if one falls in the month	Open Workshop New Member Training Evening Open Workshop	Rob McKee Rob McKee Rob McKee	8.00am – Noon 1.00pm – 3.30pm 6.00pm – 9.00pm
Future Events and Important Dates				
Saturday 13 July		Management Committee Meeting - 9am to 12:30		
Saturday 20 July		Woodturning Discussion Forum/ Show and Tell - 9.00 – Noon - Cost: \$5		
Saturday 27 and Sunday 28 July		Mt Gravatt Show - 1644 Logan Road, Mt Gravatt - Details at www.mtgravattshow.com.au		
Saturday 10 and Sunday 11 August		WSQ Woodturning Exhibition at the Mt Coot-tha Botanic Gardens Auditorium - 9am to 4pm - Cost: FREE - Refreshments available at modest cost		
Tuesday 1 October to Tuesday 31 December		WSQ Display at Brisbane City Square Library - See article on this matter later in this newsletter for further information		
Saturday 14 and Sunday 15 December		WSQ Woodturning Exhibition at the Mt Coot-tha Botanic Gardens Auditorium - 9am to 4pm - Cost: FREE - Refreshments available at modest cost		

Link to WSQ Facebook Page

https://www.facebook.com/pg/woodturnerssocietyofqld/photos/?tab=album&album_id=1241004786078243

Treasurer's Report

Due to my recent absence, this month's report covers April and May:

	Apr	May
Receipts		
Container Refunds	\$173	\$183
Memberships	\$720	\$1,275
Meeting Income	\$1,366	\$936
Stephen Hughes Demonstration	\$150	\$160
Shop Profit	\$187	\$144
WSQ Hall rental	\$1,000	\$120
Interest	\$205	\$3
Advertising in Newsletter	-	\$200
Grant	\$5,000	-
Sundry Income	\$219	\$57
	<u>\$9,020</u>	<u>\$3,078</u>
Less Payments		
Workshop Expenses	\$450	\$146
Members' Badges	\$89	-
Newsletter Expenses	\$98	\$98
Cleaning	\$300	\$240
Insurance	\$332	\$332
Library Purchases	\$319	\$14
Repairs & Maintenance	\$462	\$78
Rates	-	\$284
Telephone & Internet	\$236	\$107
Other Expenses	\$76	\$48
	<u>\$2,362</u>	<u>\$1,347</u>
Net Profit	\$6,658	\$1,732
Cash at Bank	\$44,129	\$46,066

Comments re some of the larger items are:

- A \$5,000 Volunteers' Grant from the Commonwealth Government was received in April. This will go toward training costs and purchase of new printers.
- Repairs and Maintenance costs were the regular inspection of our fire extinguishers and exit

signs and for a replacement CBN wheel for one of our grinders.

- The Rates expense in May was for our quarterly water bill.

John Reed
WSQ Treasurer

Chain Saw Training

WSQ is committed to the safe operation of machinery and tools by its members, whether it be at WSQ's premises, at home or elsewhere.

As part of this commitment, we have arranged for chain saw training to be provided to interested members by a registered training organisation. The training will consist of a one-day course involving three parts – theory, maintenance and practical/hands on. At this stage, the training will be provided on a property at Wamuran, outside Caboolture. A date is yet to be set.

The training is FREE as the cost is covered by a Commonwealth Government Volunteers Grant which we recently received.

If you are interested in undertaking this training, please:

- Note your name on the notice board list at WSQ Hall; or
- Contact Wayne Molloy by email at wbmolloy@gmail.com or by phone at 3273 2659

John Reed
WSQ Treasurer

Vale Ron Marlow



Ron Marlow, a long time and respected member of the Woodturners Society of Queensland, passed away on 30th May 2019. He is survived by his wife Shirley and his sons Caleb and Timothy, and his 'extended family'.

Ron joined the Society in 2012 and was a regular attendee at the Tuesday morning workshops, a Competition winner, and one of the top sellers at our Mt Coot-tha Exhibitions. He was also our valued Pastoral Care Officer.

Many WSQ members attended his funeral service recently, and it was only then that we all realized how this 'small in stature' man was a Giant in so many people's eyes. We all realized how fortunate we were to have known him.



At an early age he and Shirley, moved to PNG in 1967 to undertake missionary work in the remote highlands of New Guinea, in an area known as Wangai. Over the next 34 years, he used his trade skills and natural abilities to build 4 Churches, many schools, and mentor a significant number of Ministers in the Assembly of God Church. Through sad circumstances they eventually adopted a young family, and their two boys have gone on to become highly educated and well-respected members of our society.

One of Ron's last wishes was to be buried in PNG, and it was his and Shirley's intention to return his ashes to be laid to rest in the grounds of his first Church. But this wasn't to happen because it was not part of their culture. The villagers raised the necessary funds to have his last wish realized and his body has now been repatriated to Wangai for burial.

Those of us who attended his funeral were truly in awe of this unassuming, Good Man.

Rest in Peace "Pappa Ron" for you have truly earned it. Job well done!

John Reed and Bob Kennedy

One of Ron Marlow's Competition Pieces

Geoff Holbeck
Editor – Turning Talk





We've been crafting
woodworking tools in
Sheffield, England for
almost 200 years.

Robert Sorby

As one of the world's premier manufacturers of specialist woodworking tools, we are proud to say we still craft every tool right here in Sheffield, England. Our tools are made from the finest raw materials, using traditional methods and with an attention to detail you won't find anywhere else.

Each tool is meticulously processed in stages by our craftspeople. Every single tool is cut, ground, polished, hardness tested, sharpened, assembled

and packed for shipping – ultimately crafted to provide a lifetime of use in your workshop.

With an extensive range of unique, premium tools, backed by our lifetime warranty, you need look no further for the best tools you can buy. It's our attention to detail and customer first approach that puts Robert Sorby at the top of its class. You can rely on our experience – we know tools.

Proudly distributed by:

carbatec
THE HOME OF WOODWORKING

Find us at:
128 Ingleston Road
Wakerley QLD 4154

(07) 3390 5888 | www.carbatec.com.au

WSQ 2019 Competition

In WSQ's Annual Competition in June, 24 members entered a total of 82 pieces. Prizes were awarded to 48 of the items, shown by category below.

Name	Prize	Item No	Score*
Category A – Large Bowl			
Level 1			
Paul Machin-Everill	First	A1	629
Charlie Edwards	Second	A2	616
Charlie Edwards	Second	A3	616
Level 3			
John Donaldson	First	A7	625
Garth Forster	Second	A6	609
Category B – Small Bowl			
Level 1			
Charlie Edwards	First	B2	650
Don McMillan	Second	B3	637
Level 3			
Garth Forster	First	B12	588
Don Randall	Second	B16	566
Category C – Platter or Plate			
Level 1			
Allan Short	First	C3	640
Rick Harrison	Second	C1	604
Level 3			
Bill Tyrell	First	C5	525
Stuart Doherty	Second	C4	507
Category D – Vase or Hollow Form			
Level 1			
Allan Short	First	D5	716
Paul Machin-Everill	Second	D1	705
Charlie Edwards	HC**	D2	654
Category E – Spindle Turning			
Level 1			
Gary Bidgood	First	E1	743
Allan Dickson	Second	E2	686
Level 3			
Stuart Doherty	First	E3	480
Category F – Lidded Container			
Level 1			
Paul Machin-Everill	First	F3	757
Allan Short	Second	F8	720
Allan Short	HC	F10	696
Wayne Molloy	HC	F1	687
Don McMillan	HC	F6	683
Wayne Molloy	HC	F2	682
* Maximum score is 800 points			
** HC = Highly Commended			

Name	Prize	Item No	Score*
Category F – Lidded Container (cont'd)			
Level 3			
John Carney	First	F11	531
John Carney	Second	F12	528
Category G – Laminated or Segmented Forms			
Level 1			
Allan Short	First	G5	742
Gary Bidgood	Second	G3	741
Allan Short	HC	G4	678
Level 3			
Alan Loxton	First	G7	720
Alan Loxton	Second	G6	645
Category H – Pens & Pencils			
Level 1			
Gary Bidgood	First	H3	679
Level 3			
Alan Ernst	First	H2	586
Alan Ernst	Second	H1	577
Category I – Identical Pair or Matching Set			
Level 1			
Wayne Molloy	First	I2	690
Wayne Molloy	Second	I1	673
Level 3			
Stuart Doherty	First	I6	578
Bob Kennedy	Second	I5	540
Category J – Item with Other Work/Material			
Level 1			
Allan Dickson	First	J3	657
Paul Machin-Everill	Second	J2	628
Level 3			
David Williams	First	J4	594
Bill Tyrell	Second	J5	502
Category K – Pyrography			
Level 2			
Mike Dodson	First	K1	579
Mike Dodson	Second	K3	568
Level 3			
Rosie Thornton	First	K7	597
Sue Kennedy	Second	K5	548
Category L – Non-Turned Items			
Level 3			
Toni Dowd	First	L1	620

In addition to the above prizes in each category, the following Perpetual Trophies were awarded:

Moreton Machine Trophy (Encouragement Award for the item with highest points in Level 3): Alan Loxton (Item G7)

Max Morris Shield (Item with highest points in Level 1 or 2): Paul Machin-Everill (Item F3)

Mario Luigi Calligaris (Ma.Lu.Ca.) Award (highest aggregate score in Level 1): Allan Short (2818 points)

Ben Flack Memorial Trophy (highest score for item with other work): Paul Machin-Everill (Item J2)

Ray Hall Memorial Trophy (entry showing the greatest innovation in any facet of woodturning): Gary Bidgood (Item G3)

David Thomas Memorial Trophy (highest score for ornamental turning): not awarded this year.

The People's Choice Award will be awarded following display of award-winning pieces at the Mt Coot-tha Exhibition in August.

Level Promotions: Congratulations to Garth Forster and Stuart Doherty, who were promoted from Level 3 to Level 2. There were no promotions from Level 2 to Level 1. Promotion between levels is based on the award of two or more first prizes in separate categories in the current year or the previous 3 years. First prizes count towards promotion only if they are at at least 70% of the maximum for promotion from Level 3 to Level 2, or 75% of maximum for promotion from Level 2 to Level 1.



More pictures of the award-winning pieces can be seen on our Facebook page

https://www.facebook.com/pg/woodturnerssocietyofqld/photos/?tab=album&album_id=1240773622768026

Brian Creese

Competition Convenor

Photos by **Harold Wiltshire**

WSQ Member

Can You Help Us Pay For Solar Panels?

WSQ has on several occasions applied unsuccessfully for grants to fund the installation of solar panels on WSQ Hall. The Management Committee has now decided to fund this project from our own resources. In doing so, we will utilise interest free terms available from our electricity provider, Origin. However, after the projected savings, we will still be faced with a cost of several hundred dollars each month whilst we pay off the system.

How can you help?

As you would be aware, WSQ is registered as a Container Collection (Donation) Point. This means that WSQ can receive the refund on containers which you return. This can be done in two ways. Firstly, you can bring your containers to WSQ Hall and we will arrange for the refund. Secondly, you can take the containers to your local refund point and nominate WSQ as the recipient of the refund which will be credited to our bank account.

WSQ's ID for this is C10001309.

Are you still placing your empty drink bottles in your recycling bin? If so, why not drop them into WSQ Hall and allow us to receive the refund.

Most drink containers (except plain milk, spirit and wine containers) between 150ml and 3 litres are eligible for a 10 cent refund under the scheme. You can check whether a container is eligible by entering its barcode at <https://www.containersforchange.com.au/how-it-works>.

In the first six months this year, we have earned \$1,000 from container refunds. If we increase the number of containers we receive, it will go a long way to covering the repayments on the solar panels.

So, please consider nominating WSQ as the recipient of your refunds – the more funds we receive from this source, the more funds we'll have to cover the cost of the panels and, in future, our operating costs and improvements to WSQ's facilities.

John Reed
Treasurer

WSQ Display at Brisbane City Square Library

The Display is from 1 October through to the 31 December 2019 inclusive. The installation date will be Sunday 29th September.

Members wanting to display items should bring them into WSQ by Tuesday 17 September with the following information:

- Description of item
- Value (for insurance purposes)
- Timber
- Name
- Contact details (not to be displayed but will be used by me to link you directly to interested parties)

We will need 5 other volunteers to help transport, set up and take down the display. Free parking is available for two vehicles.

Brisbane City Square Library have a public conversation session each Sunday morning at 11am. We are invited through whatever means appropriate to present something about WSQ, Woodturning or other area of interest at one, or more, of these conversation sessions. These one hour public forums could attract up to 80 odd members of the public. The Brisbane City Square Library has proposed November 3 or November 10 from 11am-12pm for our conversation session. Once the date has been agreed, the Brisbane City Square Library will promote the upcoming conversation session. I need anyone from WSQ who might be interested in participating in this session to let me know ASAP.

Toni Dowd
Assistant WSQ Librarian

Jest a Moment

Two Irishmen living in Sydney.
One visits the other who is living in a high-rise building.
"Why do you like it here?"
"I like the craic*."

*Craic is a term for news, gossip, fun, entertainment, and enjoyable conversation, particularly prominent in Ireland.

Borrowed from Peter FitzSimons and The Sydney Morning Herald.

Anonymous
WSQ Member

Stephen Hughes' Demonstration No 1, 22 June

On the afternoon of 22 June, following the WSQ 40th Anniversary Celebrations, well over 20 WSQ members and friends assembled in the Phil Harris Memorial Auditorium to witness a woodturning demonstration by Stephen Hughes, a world-famous Melbourne based woodturner. The title of the demonstration was "spherical boxes with a difference".

Stephen started his presentation with a selection of images of projects he has produced. He made a number of points which I found interesting, i.e.

- You should visualise your project on paper before you try to make it.
- Make lots of sketches.
- Use pieces with "blow outs".
- The hard part is making the designs work.

Stephen distributed his sketch book which contained many extremely complex and innovative designs done with a very high degree of skill.

Spoiler alert!!! Usually, I do not include a photo of the end result until the end of the article, however, in this case I think it is better to show it now, to make it easier to explain the method in the following paragraphs.



A Spherical Box with Square Legs!!!

"It's impossible!!! It's a fake!!!" I hear you say, but it is not. I have seen Stephen make this box twice, at Turnfest earlier this year and at WSQ. He can produce this box because he has designed the final product in great detail, he has thought through the process in detail, he has designed and developed specific aids to allow him to do the seemingly impossible, and he is an extremely talented woodturner.

The aids referred to above are a pair of timber jigs. One is mounted in expansion mode on a scroll chuck in the headstock. It has a hole through its centre to allow the use of a knockout bar. The other one has a live centre fitted to it. It is used in the tail stock. The sides of the jigs are iron bark. They are attached to a circular wooden faceplate and cut to match the faceplate. These are shown below with a box in development in each. The dimensions are set by the size of the blanks to be used. The blanks must fit tightly into the jig, ultimately in all directions.



The bottom blank was fitted to the jig in the headstock and the tailstock was brought up for support. The dimensions of the box and the step were clearly marked using accurate callipers. The wall thickness was to be 6mm, the internal diameter was to be 56mm, and the step was to be 6mm high. A piece of thin ply 90mm x 90mm was placed between the blank and the tailstock. The inner and outer dimension were marked, and a parting tool was used to cut through the ply. These pieces of ply were then used as templates for both of the blanks. A small spindle gouge and a small bowl gouge were used to remove the waste and shape the interior and step. A negative raked round nose scraper to finish off the inside. The bottom blank was removed and was replaced by the top blank. The process above was essentially repeated, except the step is on the outside edge to fit the step already created on the bottom blank.

During this process it is imperative to ensure that the height of the 2 blanks when joined are exactly the same dimension as the width of the blanks because in subsequent processes the joined box has to fit sideways into the jigs.

The bottom blank was joined to the top blank, the tailstock jig was put in place and the tailstock was brought up, fitted over the bottom blank and locked in place. There was a gap of about 25mm between the faces of the two jigs. With the lathe running at about 2,000 rpm Stephen began removing the waste and shaping the sphere with a small bowl gouge and a parting tool. This process is shown below.



When Stephen was satisfied with the shape, he stopped the lathe, released the tailstock, removed the box, rotated it and brought up the tailstock again. The waste removal and shaping process was repeated.

So, there you have it ... the completed box as shown above. Stephen had demonstrated that it was possible to produce an “impossible” box with proper planning and careful, skilful execution.

The audience gave Stephen the rousing applause he well deserved. Very well done Stephen. Thanks for an outstanding demonstration.

Geoff Holbeck
Editor – Turning Talk

An article covering Stephen Hughes’ Demonstration on Sunday 23 June will be in the August edition of Turning Talk.

Lunch on Sunday 23 June



Council Library Displays

	Northside Team	Southside Team
July	Grange	Holland Park
August	Arana Hills	Mt Gravatt

John Byrne
WSQ Member

Toni Dowd
Assistant Librarian

The views expressed in this publication are not necessarily those of the Woodturners Society of Queensland or its Management Committee.

Other organisations are welcome to use, with appropriate acknowledgement, editorial material from this publication.

You're invited to contribute to the content of TT.

To do so, preferably by Email:

gholbeck@hotmail.com

Or, by mail:

C/O TT EDITOR @ WSQ
19 Pine Street, Greenslopes
Brisbane, Qld 4120

All contributions for the August 2019 edition of Turning Talk need to be submitted by no later than Monday 29 July 2019.

Tree of the Month

Marblewood



Acacia bakeri, commonly known as Marblewood is a vulnerable species of Wattle and a member of the Fabaceae family.

The native range of the species is very limited and exists in both tropical and sub-tropical rainforests ranging from Maryborough, QLD to Brunswick Heads, NSW.

There are currently initiatives in both states to reintroduce the species and you can purchase sapling from a number of native nurseries.

Description

The Marblewood is one of the largest of all Acacias, growing up to 40 – 50 meters tall. However, many of the existing plants are much shorter due to forest clearing, and its relatively slow growth rate.

The plant can be found growing in volcanic and alluvial soils along the East coast of Australia, and is one of the few Wattles that does not require fire for seed germination.

As with most wattles, the tree has long strappy dark green leaves with multiple veins running along the length. The cream coloured flowers are round and fluffy. When pollinated the tree produces, long bean like pods.



Uses

The Marblewood timbers has a heartwood that is yellow to golden brown with irregular brown, purple or black streaks weaving through the timber. The sapwood is paler with a solid yellowish colour and lacks the streaks of the heartwood. The grain can be straight or slightly interlocked and can have some open pores.

The timber of the Marblewood tree is incredibly figured. The base colour of the timber is golden and has veins of dark brown racing through the timber.



Marblewood Bowl – Gary Camardo, Rosewood and Birch

Due to its high density the timber can have a blunting effect on tools. It has range of applications including flooring, veneer, turned objects, cabinetry, instruments and fine furniture.

Geoff Holbeck

Editor – Turning Talk

*Text sourced from Wikipedia and LLA Hardwood
Images sourced from Wikipedia, Wattleday and
Rosewood and Birch.*

Turning Talk

Published by the
Woodturners Society of Queensland Incorporated

Management Committee

President: Brian Creese 3378 4041
Vice President: Bob Kennedy 3892 4675
Secretary: Rosie Thornton 0456 073 790
Treasurer: John Reed 3263 1861
Members: Alwyn Clark 3803 4270
Bob McGeehan 3394 1839
Geoff Holbeck 3901 6782
John Carney 3245 6135
John Donaldson 0407 022 403
Paul Tierney 3288 3509
Reg Weber 3206 2325

Other Positions

Emeritus Vice President: Kev Kruger
Newsletter Editor: Geoff Holbeck 3901 6782
Membership Secretary: Alwyn Clark 3803 4270
Librarian: Alwyn Clark 3803 4270
Assistant Librarian: Toni Dowd 3175 0383
Storekeeper: Don McMillan 3814 4820
Training Manager: Rob McKee 3207 1785
Asst. Training Manager: Wayne Molloy 3273 2659
Mt Coot-tha Co-ordinator: Rob McKee 3207 1785
Competition Organiser: Vacant
Web Co-ordinator: Gary Bidgood 0407 144 763
Welfare Officer: Ron Marlow 3355 5995
Caretaker: Len Young 3397 8827

**WM WOODWORK
MACHINERY... PLUS**

Unit 8 / 43 Station Avenue Darra Ph 3705 8558

Your newest woodworking shop in town,
stocking RIKON, RECORD POWER and
WOODFAST, is offering all WSQ Members

10% OFF ALL MACHINERY



Check out our brand new

The WOOD 10" Contractor Table Saw
WORKER \$1,699 incl GST

For more information please visit:
www.woodworkmachinery.com.au



VICMARC[®]
MACHINERY PTY LTD

**PROUDLY AUSTRALIAN MADE AND OWNED
SINCE 1984**



**GRINDING
REST &
SHARPENING
JIG**



**VICMARC
SLOW SPEED
GRINDER**



**QUALITY
LATHES**



CHUCKS



**HUGE
VARIETY
OF CHUCK
JAWS**

**AUSTRALIAN MANUFACTURERS OF QUALITY WOODTURNING LATHES, CHUCKS AND
ACCESSORIES**

For more information and to see our full range of products visit our website

www.vicmarc.com

Email: vicmarc@vicmarc.com Ph: (07) 3284 3103 Fax: (07) 3283 4656