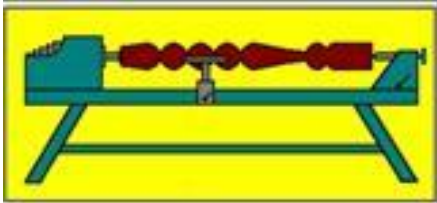


Turning Talk

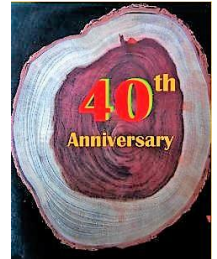
Volume 33 Number 1

February 2019



Presidential Words

For February 2019



Dear Members,

Welcome to the first edition of Turning Talk for our 40th Anniversary Year. WSQ was founded on 23 June 1979 by a small breakaway group of disaffected members of the Woodcraftsman's Guild. The aims of the new Society included "to promote, foster and practice the art of woodturning and kindred arts" and "to promote and encourage the appreciation and creative use of all types of wood, particularly Australian native woods." These key objectives still underpin WSQ's activities.

A series of special events are planned to celebrate our Anniversary Year:

- Saturday 16 February. A planning session will be held as part of the Woodturning Discussion Forum. Please come along with lots of enthusiasm and ideas.
- Saturday 2 March. Egg turning demo featuring 3 or 4 WSQ members showing us their special techniques for turning an egg shape.
- Saturday 16 March. Wooden Egg Competition. See entry form later in this newsletter
- Tuesday 19 March. Annual General Meeting followed by the award of Egg Competition prizes and another special occasion.
- Saturday and Sunday 23-24 March. WSQ Open Days. The Open Days will feature a Special Exhibition of Wooden Eggs, including the prize-winning pieces from the Wooden Egg Competition. A form for booking tables and volunteering for other Open Day activities is included later in this newsletter.
- Saturday 22 June. The main focus of the 40Y celebrations will be a ceremony with invited guests, speeches, honouring of Life Members,

birthday cake and morning tea. The morning will start with the presentation of awards for the Annual Competition. After lunch, Stephen Hughes from Melbourne will present the first segment of his 1½-day demo. Stephen is a long-time friend of WSQ having attended WSQ's International Symposium at Griffith University in 1988 and presenting guest demos in 1991 and 2005.

- Sunday 23 June. Continuation of Stephen Hughes demo.
- 10-11 August. Our 40th August Exhibition at Mt Coot-tha Botanic Gardens. The first was held on 9-10 August 1980.
- 14-15 December. Our 75th Exhibition at Mt Coot-tha Botanic Gardens.

All members are encouraged to come along to the planning session on Saturday 16 February so that we can refine and expand the above program of 40Y events. You are also encouraged to have a go at making a wooden egg, if you haven't done so already, and submitting it for the Egg Competition.

I would like to close with a very special thank you to the band of hardworking members who volunteered to help on the working bees on 4 and 8 January to sort out the wood stored under the workshop, using chain and band saws to prepare the timber into suitable blanks for woodturning. We now have a good supply of turning blanks that can be purchased through the Shop.

My thanks also go to Bob McGeechan, who has agreed to fill the casual vacancy on the Management Committee. Welcome back, Bob!

Brian Creese
President

Diary and Looking Ahead at WSQ February 2019 and Beyond

Date	Day of Month	Session Title	Convenors	Times
1 Feb	1 st Friday	Toy and Open Workshop Toy Group Open Workshop	Peter Churchward	8.00am – 3.00pm
2 Feb	1 st Saturday	WSQ Demonstration	See below	9.00am – Noon
5 Feb	1 st Tuesday	Open Workshop New Member Training Pyrography Group Evening Open Workshop	John Sheppard & Bob McGeechan Rosie Thornton	8.00am – Noon 1.00pm – 3.30pm 1.00pm – 4.00pm 6.00pm – 9.00pm
7 Feb	1 st Thursday	WSQ Safety & Workshop Induction for New Members		9.00am – 12noon
9 Feb	2 nd Saturday	Management Committee Meeting		9.00am – Noon
12 Feb	2 nd Tuesday	Open Workshop New Member Training Evening Open Workshop	Lyndon Prescott	8.00am – Noon 1.00pm – 3.30pm 6.00pm – 9.00pm
14 Feb	2 nd Thursday	Pre-Booked Project Tuition Cost - \$25.00	Rob McKee	9.00am – 12.30pm
16 Feb	3 rd Saturday	Woodturning Discussion Forum/ Show and Tell		9.00am – Noon
18 Feb	3 rd Monday	Pyrography Group	Rosie Thornton	9.00am – Noon
19 Feb	3 rd Tuesday	Open Workshop New Member Training Evening Open Workshop	John Sheppard & Bob McGeechan Rob McKee (Former DVA Team members welcome) John Sheppard	8.00am – Noon 1.00pm – 3.30pm 6.00pm – 9.00pm
26 Feb	4 th Tuesday	Open Workshop New Member Training Evening Open Workshop	Rob McKee Rob McKee (Former DVA Team members welcome) Allan Dickson	8.00am – Noon 1.00pm – 3.30pm 6.00pm – 9.00pm
28 Feb	4 th Thursday	Pre-Booked Project Tuition Cost - \$25.00	Rob McKee	9.00am – 12.30pm
N/A	5 th Tuesday Only if one falls in the month	Open Workshop New Member Training Evening Open Workshop	Rob McKee Rob McKee Rob McKee	8.00am – Noon 1.00pm – 3.30pm 6.00pm – 9.00pm

Future Events and Important Dates

Saturday 2 February	Demonstration by Peter Wyer titled "Texturing on Rims of Bowls" - 9am to noon - Cost: \$5
Saturday 16 February	Woodturning Discussion Forum/ Show and Tell - Including a Planning Session in relation to the 40 th Anniversary celebrations - 9am to noon - Cost: \$5
Saturday 2 March	Demonstration by Various Members titled "Egg Turning" - 9am to noon - Cost: \$5
Saturday 16 March	Woodturning Discussion Forum/Show and Tell / Closing Date and Judging for Wooden Egg Competition - 9am – noon - Cost: \$5
Tuesday 19 March	Annual General Meeting - 9:30am to 10am - Cost: \$5
Friday 22 to Sunday 24 March	Timber, Tools and Artisan Show (formally known as the Timber and Working with Wood Show) RNA Showgrounds - Details available at www.timbertoolsartisan.com.au
Saturday 23 and Sunday 24 March	WSQ Open Days - 9am to 4pm - Entry is FREE - Refreshments will be available at modest prices.
Friday 29 to Sunday 31 March	Turnfest 2019 - Seaworld Resort, Gold Coast - Details available at http://turnfest.com.au/

Peter Wyer's February Demonstration

The first demo for 2019 will be held on Saturday 2 February, 9.00 am to noon. Peter Wyer will show us his techniques for "Texturing on Rims of Bowls". Peter is a very good and innovative turner who conducts very interesting demonstrations. Don't miss this demo. Some images of Peter's projects follow.



Geoff Holbeck
Editor – *Turning Talk*

Wooden Egg Competition Entry Form

(one form per entry please)

Participation in the Woden Egg Competition is restricted to WSQ members. The closing date for entries is Saturday 16 March (the same day that the entries will be judged).

The only specifications for entries are that they must be egg-shaped and made predominantly of wood. Incorporation of other materials is allowed. Entries can be any size, solid or hollow, laminated, natural timber or decorated (pyrography, paint, carving etc). They can be stand-alone or accompanied by an egg cup or purpose-built stand. An entry may include more than one egg if submitted as an identical pair or set.

Name:		Office use only	
Timber type(s):		Finish:	
Dimensions: length = mm		maximum diameter = mm	
Egg type (tick all that apply):	<input type="checkbox"/> Solid	<input type="checkbox"/> Hollow	<input type="checkbox"/> Laminated
	<input type="checkbox"/> No decoration	<input type="checkbox"/> Carved	<input type="checkbox"/> Pyrography
	<input type="checkbox"/> Painted	<input type="checkbox"/> Lidded	
	<input type="checkbox"/> incorporates other materials	<input type="checkbox"/> includes egg cup or stand	
	<input type="checkbox"/> matching pair or set of eggs		
Other notable features:			
Are you eligible for the Encouragement Award (less than 2 years woodturning experience)?		<input type="checkbox"/> Yes <input type="checkbox"/> No	

Enquiries to Brian Creese brian.creese@bigpond.com phone 33784041 / 0447108551.

Entry forms to Brian Creese or Alwyn Clark please.

Entries can be brought along on Judging Day (Saturday 16 March) or left in the WSQ Library beforehand if you are unable to attend the Judging Day.

Brian Creese
President

Table Booking and Volunteering Form

Open Days, 23-24 March 2019

Volunteers are needed for the following activities during the weekend. Please consider how you can help to make this year's Open Days successful and memorable by ticking all boxes where you could contribute a few hours of your time over the weekend. Completed forms should be returned to Brian Creese, Alwyn Clark or Bob Kennedy by Saturday 2 March. Rosters will then be prepared based on your preferred activities and availability for individual sessions.

Name: _____

☐ **Sellers,**

limit of one table per member. All sellers are expected to spend some time demonstrating in the workshop at some stage over the weekend.

☐ **Publicity,**

including distribution of flyers around the neighbourhood and setting up the banners before the event.

☐ **Raffle prize,**

donation of a suitable eye-catching woodturned item will be very welcome. Please see Paul Tierney.

☐ **Raffle tickets.**

Sale of raffle tickets over the weekend.

☐ **Welcome VIPs**

and other guests, **organise tours** of the facility as appropriate, and talk to visitors about the **benefits of WSQ membership**.

☐ **Organisation of the Wooden Egg**

Display and People's Choice Award for the Wooden Egg Competition.

☐ **Donations of cakes, scones and**

biscuits for morning and afternoon teas

☐ **Morning and afternoon teas,**

volunteers are needed both days for serving tea, coffee and cakes.

☐ **BBQ lunch.**

We need one member to organise the BBQ lunches, and a couple more to cook and serve the food.

☐ **Sales Desk,**

including wrapping of sold items.

☐ **Woodturning Demonstrations.**

It would be great to have two or three lathes in operation throughout the weekend. No prior demonstrating experience is required, just a willingness to allow others to watch you turning. It would be great if all of our sellers also contributed to the woodturning demonstrations.

☐ **Other demonstrations**

and hands-on activities. Pyrography, leatherwork, toymaking, egg painting, etc.

Name of activity:

Availability – please tick all boxes where you think you will be available to help

☐ Saturday morning 23 March

☐ Saturday afternoon 23 March

☐ Sunday morning 24 March

☐ Sunday afternoon 24 March

Brian Creese
President

NOTICE OF THE 2019
ANNUAL GENERAL MEETING

THIS IS TO ADVISE ALL MEMBERS THAT
IN ACCORDANCE WITH THE CONSTITUTION
OF THE

WOODTURNERS ASSOCIATION OF QUEENSLAND INC

THERE WILL BE A

ANNUAL GENERAL MEETING

- AT 19 PINE STREET GREENSLOPES

AT 9.30 AM

TUESDAY 19TH MARCH 2019

FOR THE FOLLOWING PURPOSES ONLY

- Welcome and a-Apologies
- Confirmation of Minutes of Special General Meeting held on 27th November 2018
- Presentation of Management Report
- Presentation of Treasures and Auditor's report
- Life Membership Award
- Other Business

Membership Matters!

There were two members who have birthdays during January and February. Happy Birthday to:

- Geoff Holbeck and
- Toni Basile

There were no new members in December and January.

Alwyn Clark

Membership Secretary

WSQ Annual Competition 2019

This year's Competition will be held 2 weeks later than last year, with entries closing on Tuesday 11 June, judging day on Wednesday 19 June, and the Awards ceremony on Saturday 23 June. Rule and categories for the Competition were sent to members by e-mail on 3 December. If you would like a hard copy, or another electronic copy, please contact me or Alwyn Clark.

Brian Creese

Competition Convenor

Jest a Moment

After an intense high speed chase, an officer finally gets the law breaker to pull over. "You know," says the cop, "I was originally pulling you over to tell you your taillight is out. Why the hell did you take off like that?" "Last week my wife ran off with a cop," the man said "and I was afraid you were trying to give her back."

Anonymous

WSQ Member

Treasurer's Report

A summary of our financial position during November and December is:

	Nov	Dec
Receipts		
Container Refunds	\$14	\$173
Memberships	\$875	\$745
Meeting Income	\$1,322	\$479
Shop Sales	\$1,109	\$341
BCC Water & Sewerage Subsidy	\$200	-
Mt Coot-tha Exhibition	\$5,655	-
WSQ Hall rental	\$1,000	\$120
Christmas Party (including raffle)	\$240	\$675
Milwaukee Raffle	\$685	\$390
Sundry Income	\$194	\$104
	<u>\$11,294</u>	<u>\$3,027</u>
Less Payments		
Workshop Expenses	\$298	\$166
Members' Badges	\$187	-
Newsletter Expenses	\$205	\$103
Cleaning	-	\$300
Insurance	\$332	\$332
Shop Purchases	\$463	-
Repairs & Maintenance	\$434	\$76
Rates	\$309	-
Equipment Purchases	\$674	\$98
Mt Coot-tha Exhibition Expenses	\$1,638	\$498
Christmas Party	\$66	\$540
Electricity	-	\$988
Telephone & Internet	\$113	\$111
Drought Donation	\$750	-
Other Expenses	\$241	\$81
	<u>\$5,710</u>	<u>\$3,293</u>
Cash Surplus/(Deficit)	\$5,584	(\$266)
Cash at Bank	\$36,373	\$36,107

Comments re some of the larger items are:

- Net profit from the November Mt Coot-tha Exhibition was \$3,591, slightly lower than the preliminary figure mentioned in December's Turning Talk; this is due to the Charity Table sale proceeds being paid to Hummingbird House during December.
- Repairs and Maintenance costs were mainly for replacement defibrillator pads and servicing of the Cardiff Air system.
- Equipment Purchases included two 100 litre wheelie bins for collection of refundable containers, two new banners for exhibition advertising and a new printer.

The Drought Donation consisted of members' direct donations of \$372, which were matched by WSQ. As noted elsewhere in the Turning Talk, the donation was paid to Rotary Club of Longreach.

John Reed
Treasurer

Jest Another Moment

Paddy bursts into the local Centrelink office. "I've been ringing 0800 1730 for two days. Why don't you people ever answer the phone?" "Those are our opening hours" replied the man behind the counter.

Anonymous
WSQ Member

Major Raffle for 2018



system, Milwaukee cordless impact drill and an assortment of Milwaukee tools and accessories, valued at \$1,500.

Thanks to everyone who supported the raffle by buying and/or selling tickets and by encouraging others to purchase tickets.

Finally, a very hearty thanks to WSQ member, Murray Niebling who, through his business DEFAUS, kindly donated the major prize of the Milwaukee Packout kit, and arranged for Total Tools at Coopers Plains and Milwaukee to donate the other tools.

Congratulations to WSQ Member, Nick Paznikov, who won our raffle of a Milwaukee mobile tool storage

John Reed
Treasurer

Council Library Displays

Many thanks to all who loaned turned pieces for display in council libraries. I have been returning items loaned two years ago but have been unable to make contact with the owners of some items. These items have been stored temporarily in the WSQ library so the owners can collect them when convenient. The items belong to: Alan Loxton, Jim Thallon, and Stephen Auer. Thanks again guys.

	NORTHSIDE	SOUTHSIDE
February	Kenmore	N/A
March	Everton Park	Logan West

John Byrne
WSQ Member

An Opportunity to Make Money from Woodturning

Do you wish you had a regular outlet for your woodturned creations, and were a part of a very successful art and craft gallery? I am currently in this position. Also, I am a member of our club, and exhibit at our Mt. Coot-tha shows.

I am a woodturning exhibitor for the Kingston Butter Factory Arts and Craft Co Op where I have successfully been selling my creations for the past 20 years.

This outlet has been very rewarding for me. However, I will be relocating interstate later in the year. I have been asked by the Gallery Co-ordinator to find a suitable replacement who would like to exhibit and sell their creations.

The gallery is open 6 days a week all year round and caters to bus tour operators as well as the general public.

There are approximately 20 members who all exhibit different kinds of craft items for sale at a very minimal commission of 15% (Can't beat that). Members also have to give one day a fortnight 9am to 3pm to man the counter of the gallery.

The suitable replacement would need to maintain a reasonable display table similar those that at our Mt Coot-tha Shows.

Anyone wishing to find out more about this opportunity to exhibit and sell their work can contact me by phone on 0414839447

This could be as rewarding for you as it has been for me.

John Carmichael
WSQ Member

December Demonstration

Seventeen members and friends attended the demonstration held on December 1. The theme was Christmas Decorations. There were 4 demonstrators, as indicated below.

All the items turned, except Rob's Christmas bauble, involved basic spindle turning skills that most WSQ members possess. The design elements of some of the items would require a bit of thought and planning.

Brian Creese

Brian used Crows Ash seed pods as part of his Christmas decorations.



Ian Symes

Ian made a small snow man with a hat at a jaunty angle as seen below.



The items below were created by Ian's son Richard.



Rob McKee

Rob turned the Christmas tree shown below.



Rob turned this hollow Christmas bauble to hang on a tree. This was the most complex item turned during the session. It required the removal of the top of the blank, the hollowing out of the rest of the blank, the reattachment of the top using glue, and the creation of the appropriate bauble shape, including a small collar to allow it to be attached to a tree.



Theo Haralampou

Due to a shortage of available time Theo only spoke about and showed a number of items he had made over the years.



I would like to have included images of more of Theo's items, but my camera battery had other ideas. Sorry about that Theo and members.

It was a very informative session which gave those attending some new ideas for festive turning projects. Thanks to all the demonstrators.

Geoff Holbeck
Editor – Turning Talk

WSQ Club Jackets for Sale



Mike Models the Only WSQ Jacket in Existence

I know it is a bit warm to think about winter club jackets, but last year we missed the boat in securing fabric for them. An order for jackets will be placed in early March so I need numbers to

snare a good price and assure a pre-winter delivery.

The attached photo shows the clubs fleecy jacket with embroidered chest patch and zippered front. Sizes are the same as our current light weight club shirts and they will be \$50 for this order only.

Future orders will be a slight increase on this due to the small numbers ordered. We will not be keeping jackets in stock. They will be by special order only.

If you are wishing to purchase a jacket, please supply the following info to me at mikedodson9@hotmail.com or by phone on 0427 233 182 before 1/03/2019

- Name
- Size required
- Number of jackets required

Mike Dodson
WSQ Member

Container Refund Scheme

As previously advised, the Queensland Government's Container Refund Scheme commenced on 1 November 2018. Most drink containers between 150ml and 3 litres will be eligible for a 10 cent refund under the scheme. For those with computers, you can check whether a container is eligible by entering its barcode at <https://www.containersforchange.com.au/how-it-works>.

WSQ has registered as a Container Collection (Donation) Point. This means that, if you wish, WSQ can receive the refund on containers which you return. This can be done in two ways. Firstly,

you can bring your containers to WSQ premises and we will arrange for the refund. Secondly, you can take the containers to your local refund point and nominate WSQ as the recipient of the refund which will be credited to our bank account.

WSQ's ID for this is C10001309.

Please consider nominating WSQ as the recipient of your refunds – the more funds we receive from this source, the more funds we'll have to cover operating costs and to improve WSQ's facilities.

John Reed
Treasurer

Equipment for Sale

Ben Guha is downsizing his tool collection. He has a number of items for sale at Pine Street on February 5, after morning tea.

Items include power tools, vices, lamps, air tools, drill bits, woodturning tools, chucks and jaws. As I am doing this for Ben, please contact me.

Email: rmckee@bigpond.net.au or Mob: 0419 735 926.

Rob McKee
Immediate Past President

Letters to the Editor

Rotary Club of Longreach
PO Box 7
Longreach QLD 4730
5 December 2018

President Brian Creese
Woodturners Society of Queensland
19 Pine Street
GREENSLOPES QLD 4120

Dear Brian,

The Rotary Club of Longreach wishes to acknowledge and thank your society for its timely and generous donation of \$750 towards our drought support activities.

The Western Queensland community has endured at least six years of drought and many individuals and groups are working to mitigate the impacts. Longreach Rotary uses donations to fund a variety of activities that experience has shown gives individuals and communities a "hand up".

With Christmas approaching we are gearing up to support sixteen of our communities with their Christmas functions. Support includes distributing hundreds of Christmas hams, funding food at the community Christmas tree BBQ and where possible travelling to the smaller communities to cook the BBQ. Last weekend we catered and cooked the BBQ at Ilfracombe on Saturday night and on Sunday night did the same at Jundah plus we distributed Christmas hams at Jundah and Morella.

Thank you for thinking of us out here. We greatly appreciate your donation which helps us help our communities.

Yours sincerely

Damian Arthur
Treasurer
Longreach Rotary

...oo0oo...

Miracle at WSQ.

On the morning after the Christmas function, Bob had arranged for us to meet at a mutual friend's place in Yeronga to collect a medium sized olive tree.

3 of us arrived at 7am, cut up the recently felled logs, delivered them to WSQ, and sealed them.

I did a bit of tidying up inside after the function the night before, and when I returned found the "ugliest trailer in Brisbane" had been given a make-over.

They used 'mission brown' to seal the logs, and I now had a smick looking trailer of a similar colour ... and it looks great! The evidence is in the photo. What a great Xmas present from mates.

Bob Kennedy



Tree of the Month - New Guinea Rosewood



Botanical name: *Pterocarpus indicus*.

Other common names: Amboyna, (a name for highly figured veneers cut from burls) Solomon Islands Rosewood, Narra.

Family name: Leguminosae.

Distribution: Papua New Guinea, Philippines, Solomon Islands, South-East Asia.

Colour: The heartwood ranges in colour from golden brown, light yellow to brick red. Timber from different countries shows a wide variety of colour range and there can be examples of the colour range in individual sections. The sapwood is pale yellow.

The timber: The grain is wavy, interlocked or crossed. The texture is moderately fine and uneven due to the ring-porous structure. The timber has a characteristic fragrant odour. Rosewood can be highly figured- fiddleback, curly and ripple are common as figure. It has a persistent fragrance.

Mechanical properties: The greater the amount of red timber the heavier the timber. Medium strength and moderate bending properties. The heartwood is durable but the sapwood is lyctid borer susceptible. Small movement in service.

Working properties: Easy to work with minimal dulling effect on tools. Can be glued, nailed, and

screwed without any problems. Takes an excellent polish. Turns very well.

Uses: Furniture, high class joinery, musical instruments, decorative veneer, panelling, carved and turned items and novelties.

Availability: Fairly common in Australia.



NG Rosewood Lidded Container by Paul Machin-Everill



NG Rosewood Nut by Peter Wyer



NG Rosewood Pen by Paul Machin-Everill

Geoff Holbeck
Editor – Turning Talk

The text and tree image sourced from "Timber in Australia in Colour" by David C Clark The turned images were provided by WSQ

