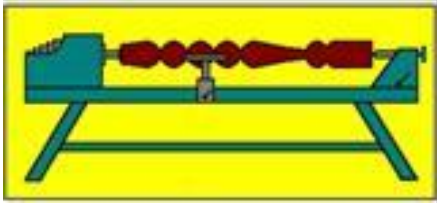


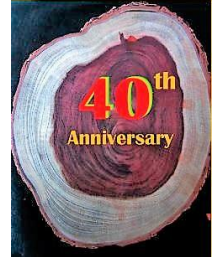
Turning Talk

Volume 33 Number 3

April 2019



Presidential Words *For April 2019*



Dear Members,

2019 WSQ President's AGM Report

Welcome to everyone attending our 2019 AGM. I think this is our 40th AGM, although I haven't been able to find any records of the first two AGMs, which were held in about May 1980 and April 1981. In 1982, the third AGM was held on 21 April at the Brisbane Community Arts Centre in Edward Street in the city.

Membership

We started the year with 219 members in March 2018 and have had 33 new members signed up in the last 12 months. With resignations, deaths & terminations our current membership now stands at 214. We were saddened to hear of the deaths of four of our long serving members in the last 12 months, including two of our Life members: Ken McCall was one of the founders of our Society in 1979, and served as Vice President for 2 years and as President for another two years. Phil Harris joined the Society in 2001, served as Secretary for one year and as President for a further 6 years. Ken and Phil were honoured for their services to the Society by being appointed as Life Members in 2009 and 2011 respectively. The other two members who died last year were Noel Logan and Brian Delahaye, who joined the Society in 1990 and 2002 respectively. The Management Committee recently reviewed the list of Honorary members, and I'm pleased to announce that Ewan Arneil, our leatherwork instructor, will continue as an Honorary Member in 2019, and that Helen Prescott and Dorothy Tyrell have also been appointed as Honorary Members in recognition of their ongoing contribution to the running of Bodger's Café at the Mt Coot-tha Exhibition.

Regular activities

Our range of regular activities increased during the year, with the introduction of two Pyrography sessions per month (first Tuesday afternoon and third Monday morning). Thank you, Rosie Thornton and Mike Dodson, for organising these sessions. The Tuesday

morning workshop session and smoko meetings continue to be the backbone of our Society, with about 40 members attending each week. On Tuesday afternoons we have a training session for new members and a small group of regulars including three deaf members. Tuesday evening workshops are designed for members still in the workforce, and we regularly see about 6 of them each week. On Wednesday mornings, we have a special workshop for clients of the Gordon Park Alzheimer's Program and thanks go to Mike Dodson, Bob Kennedy, Bob McGeechan, Alwyn Clark and Wayne Molloy for running this valuable program. Leather Classes are run by Ewan Arneil on Sunday mornings. The WSQ Toy Group led by Peter Churchward and Toni Dowd continues to work hard making toys for charities. We also have monthly Discussion Forum meetings on the third Saturday of each month, and the Committee has been experimenting with different formats for this meeting, including the Wooden Egg Competition last weekend. We have also been trying out new formats for the regular monthly demos, with collaborative demos in December on making Christmas ornaments and in March making wooden eggs. Four experienced members contributed to each of these sessions and showed our members the range of techniques that can be used to make simple woodturned objects.

The ongoing success of regular workshop activities would not be possible without the dedication of many members who are committed to ensuring that the equipment is maintained, the workshop areas are well organised and kept clean, and that members using the facilities do so safely and in a way that is respectful of others. I thank you all for your contribution to the day-to-day running of the club, which I hope will continue and make my job as President so much easier. I am particularly grateful to our small band of Convenors without whom the Society would not be able to operate in the way it does so successfully at the moment: Rob McKee, John Sheppard, Bob McGeechan, Lyndon Prescott and Allan Dickson. And also, Reg Weber, who

19 Pine Street, Greenslopes (Brisbane), Queensland, 4120, Australia

Phone: (07) 3397 8156

Email: WSQ@bigpond.com

Website: <http://woodturnerssocietyqld.org.au/>

Founded June 1979 and incorporated September 1986

is responsible for the ongoing maintenance and repair of the lathes and other workshop machinery.

WSQ Facilities and Services

The WSQ Shop continues to go from strength to strength, providing members with an increasing range of woodcraft products and equipment at affordable prices. The last year has seen more timber blanks being made available through the Shop, and I thank Reg Weber and Don McMillan in organising this initiative. I thank Don and his band of helpers for the continued smooth operation of the Shop. The Library continues to be a showpiece of our Society and a credit to Alwyn Clark and his assistant Toni Dowd. Geoff Holbeck continues to create our much-loved newsletter Turning Talk. This is Geoff's 9th year in the job and he is to be congratulated on this outstanding service to the Club.

Annual Events

Our main annual events are the Woodturning Competition in June, Open Days also in June last year, Woodturning Exhibitions & Sales at Mt Coot-tha Botanic Gardens in August and November, and of course our Christmas Party in December. All of these events require a great deal of effort and coordination, many thanks must go to all members who volunteered and contributed to the success of these events last year. Particular thanks go to Mike Dodson, Sue Kennedy and John Lullfitz who do such great service in providing food and refreshments at these events.

Woodturning Demonstrations

We were fortunate to be able to host three visiting demonstrators last year. In April, Zina Burloiu from Romania combined with WSQ member Terry Martin to show us the art of chip carving. Following the all-day demo on the Saturday, Zina presented a hands-on workshop allowing members to try out this technique for themselves. In August, Kerry Cameron from Redcliffe Woodcrafters showed us how to use power carving tools to embellish our woodcraft. And in October, Andrew Potočnik from Melbourne presented a one-day demo in which he showed us his techniques for turning pod forms, wood bending, and the use of moulding paste for texturing bowl rims. The members who participated in these events learned many new skills and techniques, and thoroughly enjoyed themselves.

Other demonstrators during the year were Ian Symes showing us how to make offset salt and pepper shakers

in May, John Sheppard with his long-stemmed goblet in June, Allan Dickson and Albert Takken showing us how to use bowl savers in July, Dan Woodward demonstrating box making in September, Rob McKee with his "Burnt Offerings" in November, and Peter Wyer demonstrating his techniques for bowl rim carving in February. We are very privileged to have such a range of talented and experienced turners who are willing to show us new techniques and tips for improvement, as well as covering the basics for new members.

WSQ Management Committee

After a bit of a slow start at the SGM in November when we did not have a nomination for the position of Vice President, we now have a full complement of Committee members, most of whom are continuing on from last year. I thank the continuing members for their hard work, dedication and determination over the last 12 months. I thank Rosie Thornton for taking on the important and challenging role of Secretary, and Bob Kennedy and John Reed who have continued in the equally important roles of Vice President and Treasurer respectively. And a special thank you to Alwyn Clark, for continuing in the role of Membership Secretary. I also thank the two new members of the Committee, John Donaldson and John Carney for volunteering to serve on the Committee. Both of them have already made a substantial contribution to the management of the Society and come up with exciting ideas and initiatives to increase our involvement with the broader community. I also welcome Bob McGeechan back to the Committee; even though Bob has had a well-earned break from the Committee for a few years, he has continued to serve the Society in so many different ways, and I thank him for his continued dedication and commitment. I look forward to working with all of the Committee members and Society members as we continue to celebrate our fortieth anniversary. Finally, I would like to pay homage to Kev Kruger, who served on the Committee for a total of 14 years, 10 of them as Vice President. During this time, Kev kept us all on track with his deep understanding and knowledge of our Constitution, By-Laws and other governance matters. It was a shock and blow to the smooth running of the Committee when we learned in June last year that Kev was forced to step down from the Committee for health reasons.

Brian Creese
WSQ President

Congratulations

Congratulations to John and Barb Sheppard for being awarded the Bill Rudd Spirit of Turnfest Award last weekend for their contribution to Turnfest over many years. This is the second year in a row that the Award has been presented to a WSQ member, with Rob and Monica McKee receiving it last year.

Brian Creese
WSQ President

Diary and Looking Ahead at WSQ April 2019 and Beyond

Date	Day of Month	Session Title	Convenors	Times
2 Apr	1 st Tuesday	Open Workshop New Member Training Pyrography Group Evening Open Workshop	John Sheppard & Bob McGeechan Rosie Thornton	8.00am – Noon 1.00pm – 3.30pm 1.00pm – 4.00pm 6.00pm – 9.00pm
4 Apr	1 st Thursday	WSQ Safety & Workshop Induction for New Members		9.00am – 12noon
5 Apr	1 st Friday	Toy and Open Workshop Toy Group Open Workshop	Peter Churchward	8.00am – 3.00pm
6 Apr	1 st Saturday	WSQ Demonstration	See below Not this Month Rescheduled for Saturday 13 April	9.00am – Noon
9 Apr	2 nd Tuesday	Open Workshop New Member Training Evening Open Workshop	Lyndon Prescott	8.00am – Noon 1.00pm – 3.30pm 6.00pm – 9.00pm
11 Apr	2 nd Thursday	Pre-Booked Project Tuition Cost - \$25.00	Rob McKee	9.00am – 12.30pm
13 Apr	2 nd Saturday	Management Committee Meeting	Not this Month Rescheduled for Saturday 6 April	9.00am – Noon
15 Apr	3rd Monday	Pyrography Group	Rosie Thornton	9.00am – Noon
16 Apr	3 rd Tuesday	Open Workshop New Member Training Evening Open Workshop	John Sheppard & Bob McGeechan Rob McKee (Former DVA Team members welcome) John Sheppard	8.00am – Noon 1.00pm – 3.30pm 6.00pm – 9.00pm
20 Apr	3 rd Saturday	Woodturning Discussion Forum/ Show and Tell	Not this Month due to Easter	9.00am – Noon
23 Apr	4 th Tuesday	Open Workshop New Member Training Evening Open Workshop	Rob McKee Rob McKee (Former DVA Team members welcome) Allan Dickson	8.00am – Noon 1.00pm – 3.30pm 6.00pm – 9.00pm
25 Apr	4 th Thursday	Pre-Booked Project Tuition Cost - \$25.00	Rob McKee	9.00am – 12.30pm
29 Apr	5 th Tuesday Only if one falls in the month	Open Workshop New Member Training Evening Open Workshop	Rob McKee Rob McKee Rob McKee	8.00am – Noon 1.00pm – 3.30pm 6.00pm – 9.00pm
Future Events and Important Dates				
Saturday 6 April		Management Committee Meeting - 9am to 12:30		
Saturday 13 April		Demonstration by Theo Haralampou titled "Making a Natural-edge Mushroom" – 9am to noon - Cost: \$5		
Saturday 20 April		Woodturning Discussion Forum will not be held due to Easter.		
Saturday 4 to Monday 6 May		Maleny Wood Expo, Maleny Showgrounds - Cost: \$15, Concessions \$12 - Details: www.malenywoodexpo.com		
Saturday 22 June		40th Anniversary celebrations - 9am to noon -.. Entry is FREE		
Saturday 22 June		Demonstration by Stephen Hughes - 1pm to 4pm - Topic to be advised - Cost: \$25		
Sunday 23 June		Demonstration by Stephen Hughes - 9am to 4pm - Topic to be advised - Cost: \$35		

Treasurer's Report

This month's report comprises two sections, firstly, our financial result for the year ended 31 December 2018 and, secondly, a report covering our February position.

Year Ended 31 December 2018

A brief extract of last financial year's results is:

Income

Container Refunds	\$187
Exhibitions	\$10,241
Grants/Subsidies	\$3,384
Hall Letting	\$4,675
Membership	\$14,410
Raffles	\$2,010
Shop Gross Profit	\$3,919
Workshops/Special Events	\$20,646
Other	\$3,141
	\$62,613

Expenses

Depreciation	\$2,783
Electricity	\$3,977
Exhibition Expenses	\$3,601
Insurance	\$6,114
Equipment Purchases <\$5,000	\$8,400
Property Expenses	\$5,274
Rates	\$1,746
Repairs & Maintenance	\$1,154
Telephone & Internet	\$1,373
Training	\$1,725
Workshop/Special Events	\$8,561
Other	\$10,577
	\$55,285
Net Profit	\$7,327

The report I presented at the AGM follows:

Many of the things that Brian has mentioned in his report are also reflected in the Society's financial position, so I'll just stick to an explanation of some of the major income/expense items.

Membership – Our annual membership fees increased in 2018, resulting in a higher income level. The Management Committee has resolved that membership fees will remain unchanged for the current year. The fees will be reviewed again later this year.

Club Meetings – The three Tuesday workshops remain the best patronized. However, the numbers attending these and other workshops, Saturday demonstrations and forums were higher than in 2017.

Hall Letting – Most of this income is from Rob McKee's business, R M School of Woodworking. A sub-letting agreement also commenced in September with the Australian Orchid Council for their Judges' Course. This will continue on the 4th Saturday each month until early 2020.

Exhibitions – The profit from the two Mt Coot-tha shows and the Open Day Weekend was \$6,640 which

was an increase of \$1,200 over the previous year. This was an excellent result and reflects favourably on the efforts of the volunteers and exhibitors at these events.

Grants – Despite the efforts of the Grants Sub-Committee, we weren't as successful last year as in prior years. The main grant received was:

\$2,984 Lord Mayor's Suburban Initiative Fund
- to assist with the roof repairs.

Shop – The shop continued to sell a good range of consumables to members and generated a profit of \$3,900. Special thanks to Mike Dodson for his work over the last couple of years in revamping the shop and also to Don McMillan for his assistance to Mike and for taking over the shop role.

Raffle – Our major raffle of the Milwaukee Pack Out and other Milwaukee products generated a profit of approximately \$1,500. Our thanks and appreciation go to our member, Murray Niebling, for donating the major prize and for organizing the other prizes.

Competition Expenses – The expenses were at normal levels in 2018 after "catch up" payments for an oversight were paid in 2017.

Computer Expenses – This expense was higher in 2018 due to repairs on two computers and to purchase of a virus protection software programme.

Depreciation – As mentioned last year, the Management Committee decided that all acquisitions costing \$5,000 or less would be written off immediately and to write down any existing assets with a value of less than \$5,000. Hence, our total depreciation expense for 2017 of \$49,577 was a "once off" write down with the 2018 depreciation of \$2,783 reflecting that policy its first full year.

An asset register is still maintained for all our assets, regardless of their value; this is also used for insurance purposes.

Electricity – Electricity remains a major operating expense. We continue to be unsuccessful in obtaining a grant for solar panels.

Insurance – In 2017, we paid \$1,740 in excesses for two claims. When adjusted for this, our cost in 2018 increased by some \$730. This is mainly due to our business insurance policy which, following a review of the replacement value of our plant and machinery, saw the value of our contents cover more than double.

Plant & Equipment Purchases <\$5,000 - \$8,400 was spent on purchase of plant, equipment, furnishings etc. Some of the more notable items were pyrography equipment (\$460), new blinds for the auditorium (\$1,042), new tables for the auditorium (\$658), 2nd hand scroll saw (\$600), 2nd hand VL150 lathe (\$2,200) and new banners for exhibitions (\$550).

Property Expenses – Our main cost was for roof repairs of \$2,984. This was funded via a grant.

Repairs and Maintenance – There were just the usual ongoing repairs and maintenance with no major repair during the year.

Training – This was for a band saw course which was funded via a grant received in 2017.

Special Events – We ran two special events during the year; firstly, the Zina Burliou/Terry Martin demonstration and workshop in April, and the Andrew Potocnik demonstration in October. Whilst not specifically shown in the financial statements (they are included within Workshops/Events income and expenses). These demonstrations were well attended and ran at a combined profit of \$900.

Other Expenses – Other expenses, not included above, are generally self-explanatory.

Bank – Bank balance at the beginning of the year was \$32,114 and the balance at the end of the year was \$36,107, reflecting our cash surplus for the year of \$3,993.

Stock – The shop is now fully stocked with the value of stock at year end being \$11,547. It is anticipated that stock levels will remain around this amount.

Summary – This is a brief summary of our trading position during the year. Our books have been audited by our auditor, Eamon Lynch of Whitehouse Audit. The audited financial reports are available for inspection by members, so please let me know if you would like to do so.

Future Expense – Due to our lack of success in obtaining grant funding for solar panels, the Management Committee has decided to fund a 10kw solar system from our own resources. This will occur within the next few months at a cost of \$12/13,000.

Treasurer's Position – 2019 is my 5th year as Treasurer and, in the interests of good governance, I think it is appropriate for management of the Society's

finances to be handed over to a new person. Accordingly, I don't propose to seek re-election at this year's committee election in November. If you are interested in taking on this role, please see me so we can have a chat about the Treasurer's role.

February 2019

A summary of our financial position at the end of February is as follows:

Income	
Memberships	\$580
Meeting Income	\$1,106
Container Refunds	\$141
Hall Rental	\$1,465
Shop Profit	\$334
Sundry Income	\$467
	<u>\$4,093</u>
Less Expenses	
Workshop Expenses	\$372
Insurance	\$1,547
Library Purchases	\$125
Telephone & Internet	\$110
Cleaning	\$240
Rates	\$398
Property Expenses	\$253
Equipment Purchases	\$187
Audit Expense	\$550
Other Expenses	\$546
	<u>\$4,328</u>

Net Loss **(\$233)**

Cash at Bank **\$35,254**

Container Refunds continue to be a valuable source of funds with income so far this year of \$300.

Sundry Income includes \$250 in prepayments for the winter jackets and also \$129 in drink sales.

Insurance includes the annual Voluntary Workers Personal Accident insurance premium of \$1,215.

John Reed
Treasurer

Wooden Egg Competition



The Competition Entries

On Saturday 16 March, WSQ held a special mini-competition as part of our 40th Anniversary celebrations. Members were asked to submit entries that were egg-shaped and made predominantly of wood. The 32 entries showed a wide variety of design concepts - solid eggs, hollow eggs, laminated eggs, lidded containers and sculpture - and decorative techniques - pyrography, carving and painting. Many entries included an egg cup or purpose-built stand.

The entries were judged by a panel of 20 members who attended the monthly Forum meeting, led by a panel of three 'egg-spurts' (Theo Haralampou, Terry Martin and Rob McKee). The following entries received awards:

AWARD	Winner	Entry No
Largest egg	Albert Takken	32
Smallest egg	Brian Creese	21
Best painted egg	Harold Wiltshire	05
Best carved egg	Peter Wyer	30
Best pyrography	Sue & Bob Kennedy	11
Most attractive egg without added decoration	Stuart Doherty	17
Most unusual timber	Dan Woodward	32
Best egg incorporating other materials	Allan Short	01
Best hollow egg	Dan Woodward	31
Best laminated egg	Stuart Doherty	17
Best segmented egg	Allan Short	01
Best lidded container	Peter Payne	25
Most innovative design	Rosie Thornton	19
Best finish	Allan Dickson	03
Award for technical prowess	Dan Woodward	31
Best egg with egg-cup combination	Peter Payne	25
Best egg with other stand design	Brian Creese	04
Best set of eggs (any number)	Allan Dickson	03
Encouragement award	Stuart Doherty	17
Encouragement award	Terry Hinton	24
People's Choice Award	Harold Wiltshire	05

Awardees received prizes donated by Vicmarc Machinery, Carbatec and Woodwork Machinery Plus, or timber blanks from Phil Harris' estate. WSQ gratefully acknowledges the support of these sponsors.



Rosie Thornton



Peter Payne



Encouragement Award Entry

Brian Creese
Competition Organiser

Photos by Alwyn Clark

April Demonstration

The date for the next month's demo has been changed from Saturday April 6 to Saturday April 13. The topic will be "Making a Natural-edge Mushroom", presented by Theo Haralampou. It will be a hands-on demo, limited to 8 participants. This is an ideal opportunity for newer members looking to improve their basic spindle turning skills. The demo will cover the use of a spindle gouge and chatter tool. Theo will provide the chatter tool, and spindle gouges are available at WSQ (or bring your own). Participants are asked to bring their own timber for this project, a piece of branch wood, preferably with bark attached, about 75 mm in diameter and 180 mm in length.

The cost will be the usual demo attendance fee of \$5. The demo will start at 9.00 am and finish about midday.

As the number of participants is limited, please reserve your place early, either by adding your name to the list on the noticeboard or sending an e-mail to me or wsq@bigpond.com.



Brian Creese
WSQ President

TriCare Residents Visit WSQ

On Thursday 21 March, eight residents of TriCare Aged Care Residence at Sunnybank Hills visited WSQ, accompanied by two of their carers, Lauren and Jacinta. The group was welcomed with a lavish morning tea prepared by Toni Dowd. Sue Kennedy demonstrated pyrography techniques while I gave a short demo on how to use the lathe to make a vase. Some of the visitors then enjoyed a tour of the Workshop and facilities. The group included a long-time WSQ member, Jack Turner, who was President in 2003 and 2004, and was appointed as a Life Member in 2007. One of Jack's enduring contributions to the Society was the construction of the original kitchen area in the corner of the workshop, which was subsequently named '(Jack) Turner's Retreat'.



Brian Creese
President

Greenslopes State School contribution to WSQ's Open Day 2019

The Students of Greenslopes State School made a noticeable contribution to our Open Day for 2019.

Under the guidance of Mrs Shannon Wilson the students participated in a design exercise that was transferred to some wooden eggs turned by WSQ members for the occasion. The medium used on the eggs was acrylics and was done by grades 4 and 5 and some of the grade three students.

Shannon was a visitor to our Open Day on Sunday morning. She was very impressed with how we had incorporated the School into the open day. Shannon said that the children were excited by the eggs and worked very diligently at the task of decorating them. Several of the students also came to Pine Street with

their family to see the display, and spent some time looking at what was for sale and what WSQ does.

I am in the process of trying to arrange a turning demo at either WSQ or the school. This will require some effort as it involves matching the demo to Queensland Education curriculum needs. At this stage it is planned WSQ will do a similar event with the School for the open day next year. Members might like to make suggestions as what easily turned items could be used instead of eggs

I would like to thank Don McMillan and Albert Takken for their support in making most of the eggs for the School. Albert also turned a large egg that can be seen at the back of the table, this egg was decorated by Shannon and inscribed with the names of the participating students



John Carney
Management Committee Member

Phil Harris Memorial Auditorium



On Tuesday 19 March, the Auditorium at WSQ was renamed as the **"Phil Harris Memorial Auditorium"**.

Phil Harris was a member of WSQ from 2001 until his death in August last year. He served as Secretary in 2004, and as President from 2005 to 2010. He was appointed a Life Member in 2011.

In his role as President, Phil was the driving force behind the construction of the extension to the WSQ building, including the Auditorium, from the time it was first proposed in 2006 to its opening in 2012.

The renaming was marked by the unveiling of a plaque engraved on a large slab of Southern Silky Oak, crafted by WSQ Committee member, Paul Tierney and engraved at Gregory Machinery Pty Ltd. The ceremony was attended by Phil's widow, Colleen King (centre in photo below) and daughters Pauline and Carol.

Brian Creese
President

Membership Matters!

Birthdays

No birthdays to report this month.

New Members

A hearty welcome to the following new members:

- > Loretta Scaini-Clarke from Greenslopes,
- > Roger Grimley from Tennyson, and

John McRea from Tarragindi.

New members, when signing in please look on the small white board next to the cash tin for your name badges.

Alwyn Clark

Membership Secretary

March/April Council Library Displays

	Northside Team	Southside Team
April	N/A	Carindale
May	Hamilton	Mt Ommaney

John Byrne

WSQ Member

Toni Dowd

Assistant Librarian

Induction Process for New Members

1. Competency check list completed with membership kits.
2. Allocate a "buddy" to coach and mentor new member.
3. On-site walk-through Workshop and premises and machinery.
4. WH&S issues and Workshop Safety induction/ explained.
(Explain the use of tools, sandpaper, polishes & timber during the training period of 4 weeks)
5. Evaluate competences and agree "where training is required".
6. Allocate trainer/provide training (convenor, competent person).
7. When training completed, the Convenor/assistant Convenor will verify and certify member is 'competent' and note records accordingly.
8. Retrain if necessary,

9. Ongoing coaching and mentoring continues with the allocated buddy, conveyor or assistant convenors.

Note 1: All training / competency is exclusive of the bandsaws, the panel saw, and drop saw. Also the thickener and the drum sander are excluded. These are specialist machines requiring expertise and specialist knowledge.

Note 2: Each Member has a Personnel File in which records are kept.

Note3: The Tuesday afternoon workshop is set aside for new member training. Training is also available on Tuesday nights (6 – 9 pm).

Note 4: Be responsive to the member's wishes, as multiple tutors can be confusing and unsettling.

Bob Kennedy

Vice President

The Silent Killers

Asbestos.

History stands firm in this mineral's danger. It has been a silent killer for decades. The end result is mesothelioma.

Stone Masonry.

Sadly this culprit has only recently come to the fore. Silicosis is a frightening consequence. It is now acknowledged as a terminal illness.

Black Lung

A disease of the lungs that coal miners are exposed to. Again, there is no known cure. It is very dangerous and usually terminal.

Wood Dust

Some timbers are already known as carcinogenic. All are very dangerous, and history will prove it so. Emphysema is the likely outcome. This is really scary.

Please consider this threat seriously, use the dust extraction systems available at WSQ, and use a personal face mask. You are not going to be given a second chance!!!

Bob Kennedy

Vice President

March Demonstration

On the morning of Saturday March 2 twenty members and friends gathered at WSQ Hall to witness a demonstration titled "Egg Turning" conducted by 4 WSQ "eggsperts", i.e. Theo Haralampou, Allan Dickson, Brian Creese, and Rob McKee.

Theo used an interesting method. He set up a single LED light above his position at the lathe. He attached an articulated arm holding a drawing of the desired egg shape to the front of the lathe. The light cast a shadow of the blank onto the pattern drawing. Theo had constant feedback via the shadow as he turned the blank to egg shaped.



Theo Turning His Egg

It took a while for Theo to set up his equipment, but it seemed to work as it didn't take very long to produce the egg shown below.



Theo's Completed Egg

Allan Dickson advised that when he first decided to make wooden eggs, he took a dozen eggs and measured them carefully and came up with a pattern which he still uses today. Over the years Allan has produced thousands of eggs which he now turns by eye,

very quickly. The image below shows Allan turning an egg.



Allan's Completed Egg

Brian's method involved a detailed geometric analysis of the egg shape. This involved a fair bit of careful measuring and the cutting of a series of precise depth guides.



Because Brian was doing a hollow egg, which takes more time than a solid egg, he completed his egg in his own workshop. Brian's completed egg is shown below. It contains some pieces of plastic, and rattles.



Rob, like Allan has produced thousands of wooden eggs, so he does it by eye. The image below shows Rob in action. As a point of difference, Rob used a homemade collet chuck to hold the egg during the finishing process.



Rob's Egg and Collet Chuck

The audience gave the four turners a hearty round of applause at the end of their entertaining and informative demonstrations. Many thanks to the four turners for their excellent efforts.

Geoff Holbeck
Editor – Turning Talk

Tree of the Month – Desert Oak



Botanical name

Acacia coriacea

Common names

Desert oak. (It is called desert oak because it resembles certain species of *Hakea* and *Grevillea*.)

Description

Erect shrub up to 4-5 m high to a small tree of 6-10 m, dark grey bark, thick and fibrous, new shoots covered with appressed yellow hairs.

Phyllodes : variable in shape, usually linear either almost cylindrical or flat, leathery (hence the name), or even hard and sub-woody, often twisted. 10-35 cm long, x 1.5-12 mm wide, with a sub-acuminate apex, covered with a deciduous silvery down, less than 2 mm long. Provided with many fine, parallel, inconspicuous, non-anastomosing nerves.

Flowers creamish to pale-yellow, clustered by 30-50 in spherical heads 5-8 mm in diameter, on a 5-10 mm peduncle. Rudimentary whorls with only 1-2 heads, flowering year-round.

Pods covered with a fine, light-grey down, coriaceous or downright woody, often twisted 15-35 cm long x 7-12 mm wide, with narrow constrictions between seeds, more or less flattened, with longitudinal nerves.

Seeds longitudinally set out in the pod articles, 4-10 mm long x 4-6 mm wide. With a large, fleshy, orange-red aril circumscribing about 1/3 of the seed.

Allied taxa : *A. sericophylla* Pedley, *A. stenophylla* Cunn. ex Benth.

Water

This is one of the most drought-tolerant tropical acacias of North and North West Australia, being able to survive years with no more than 50 mm of rain in 20 days in its native area of distribution. Rainfall in its native habitat varies from 200 to 500 mm MAR.

Soil

This species proliferates mainly in deep sandy soils.

Distribution

In Australia it occurs along the 20°S Lat. from Western Australia, through the Central Highlands, north-west Queensland and into the Northern Territory.

Propagation

Propagation by seeds, good ability to suckering, life span fairly long.



Turned Apple and Pear in Desert Oak
Created by Allan Dickson

Geoff Holbeck

Editor – *Turning Talk*

Text sourced from the Food & Agriculture Organisation of the United Nations web site. Tree image sourced from the Atlas of Living Australia web site. The image of turned items was supplied by WSQ.

Turning Talk

Published by the
Woodturners Society of Queensland Incorporated

Management Committee

President: Brian Creese 3378 4041
Vice President: Bob Kennedy 3892 4675
Secretary: Rosie Thornton 0456 073 790
Treasurer: John Reed 3263 1861
Members: Alwyn Clark 3803 4270
Geoff Holbeck 3901 6782
John Carney 3245 6135
John Donaldson 0407 022 403
Paul Tierney 3288 3509
Reg Weber 3206 2325
Bob McGeechan 3394 1839

Other Positions

Emeritus Vice President: Kev Kruger
Newsletter Editor: Geoff Holbeck 3901 6782
Membership Secretary: Alwyn Clark 3803 4270
Librarian: Alwyn Clark 3803 4270
Assistant Librarian: Toni Dowd 3175 0383
Storekeeper: Don McMillan 3814 4820
Training Manager: Rob McKee 3207 1785
Asst. Training Manager: Wayne Molloy 3273 2659
Mt Coot-tha Co-ordinator: Rob McKee 3207 1785
Competition Organiser: Vacant
Web Co-ordinator: Gary Bidgood 0407 144 763
Welfare Officer: Ron Marlow 3355 5995
Caretaker: Len Young 3397 8827

VM VICMARC[®] MACHINERY PTY LTD
MANUFACTURER OF QUALITY WOODTURNING LATHES, CHUCKS AND ACCESSORIES

4 JAW CHUCK RANGE



The VM150 has two actions, one to quickly open and close the chuck as though it was lever operated (fully opens within 3 revolutions), the other to tighten using the 'T' key as you would in a standard key operated scroll chuck.

Vicmarc Key Chuck Range:
VM100, VM120 and VM150

ECCENTRIC CHUCK



The main feature of the chuck is its infinitely variable axis setting capacity. With an offset range of 0 to 30mm, each setting gives a different turning axis. In addition to this the rotating cup chuck allows you to create an even wider variety of shapes, depending on the chosen axis. The optional ball chuck allows the work piece to be swivelled up to 15° off axis for even more flexible turning.

The Vicmarc Escoulen Chuck originally designed by Jean Francois Escoulen and manufactured by Vicmarc expands the possibilities for off centre turning. The accessories also allow eccentric turning.

For your nearest Vicmarc[®] dealer please contact us:
Phone: + 61 7 3284 3103
Fax: + 61 7 3283 4656

Check our website for the full range of Lathes, Chucks and Accessories
Web: www.vicmarc.com
Email: vicmarc@vicmarc.com

Thought You Knew Everything?



"Stewardesses" is the longest word typed with only the left hand.



And 'lollipop' is the longest word typed with your right hand.
(Bet you just tried these out mentally, didn't you?)



No word in the English language rhymes with month, orange, silver, or purple.

The views expressed in this publication are not necessarily those of the Woodturners Society of Queensland or its Management Committee.

Other organisations are welcome to use, with appropriate acknowledgement, editorial material from this publication.

You're invited to contribute to the content of TT.

To do so, preferably by Email:

gholbeck@hotmail.com

Or, by mail:

C/O TT EDITOR @ WSQ
19 Pine Street, Greenslopes
Brisbane, Qld 4120

All contributions for the May 2019 edition of Turning Talk need to be submitted by no later than Saturday 27 April 2019.